

Output results of CLIME (CLustering by Inferred Models of Evolution)

Dataset:

Num of genes in input gene set: 3
Total number of genes: 20834
Prediction LLR threshold: 0

The CLIME PDF output two sections:

1) Overview of Evolutionarily Conserved Modules (ECMs)

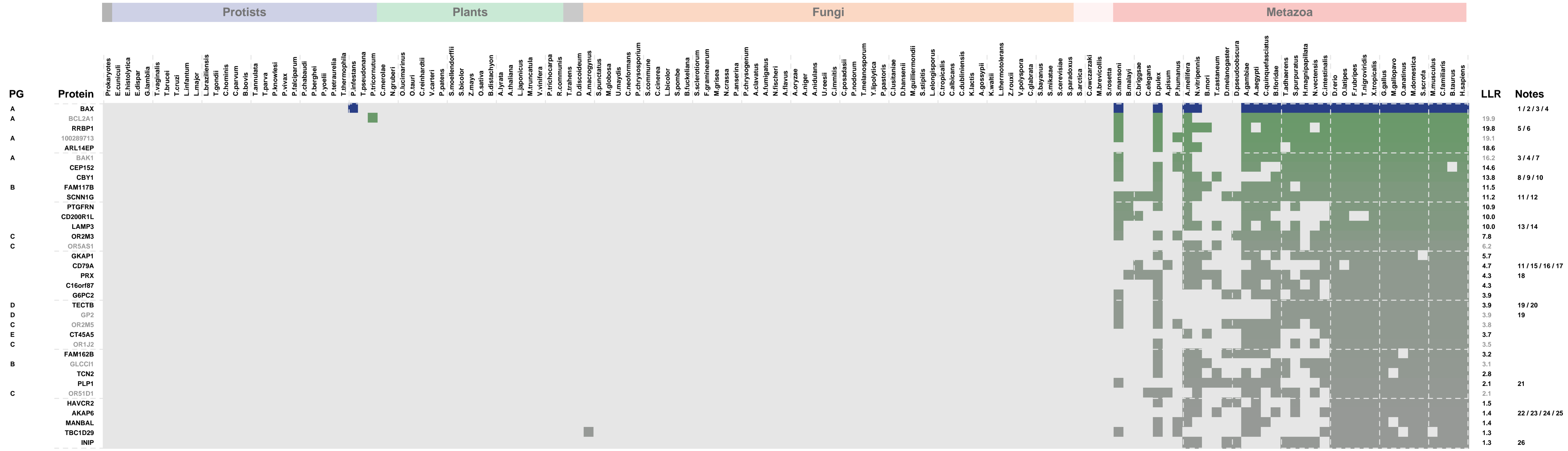
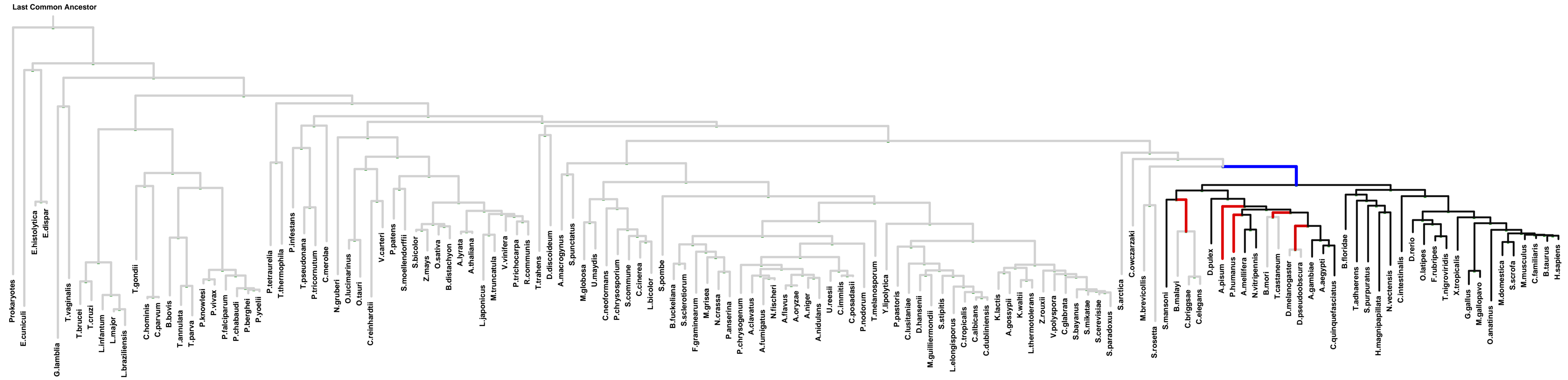
- Top panel shows the predefined species tree.
- Bottom panel shows the partition of input genes into Evolutionary Conserved Modules (ECMs), ordered by ECM strength (shown at right), and separated by horizontal lines.
- Each row show one gene, where the phylogenetic profile indicates presence (blue) or absence (gray) of homologs in each species (column).
- Gene symbols are shown at left. Gray color indicates that the gene is a paralog to a higher scoring gene within the same ECM (based on BLASTP $E < 1e-3$).

2) Details of each ECM and its expansion ECM+

- Top panel shows the inferred evolutionary history on the predefined species tree. Branch color shows the gain event (blue) and loss events (red color, with brighter color indicating higher confidence in loss). Branches before the gain or after a loss are shown in gray.
- Bottom panel shows the input genes that are within the ECM (blue/white rows) as well as all genes in the expanded ECM+ (green/gray rows). The ECM+ includes genes likely to have arisen under the inferred model of evolution relative to a background model, and scored using a log likelihood ratio (LLR).
- PG indicates "paralog group" and are labeled alphabetically (i.e., A, B). The first gene within each paralog group is shown in black color. All other genes sharing sequence similarity (BLAST $E < 1e-3$) are assigned to the same PG label and displayed in gray.

ECM 1, Gene set "Bcl-2 family protein complex", Page 1

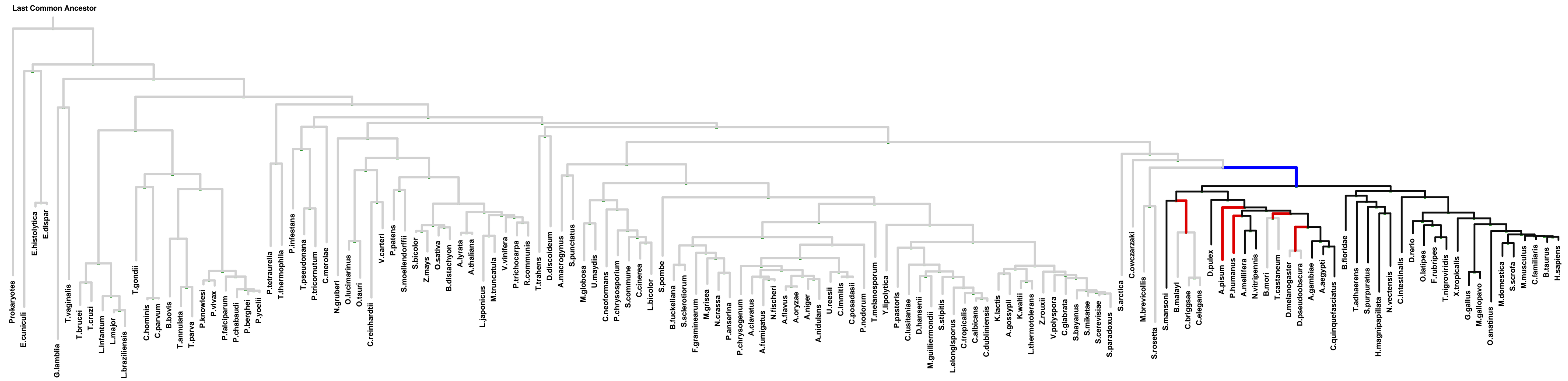
Num of ECM Genes: 1. Num of Predicted Genes: 49



1: Bcl-2 family protein complex || 2: cytosolic part || 3: mitochondrial outer membrane || 4: pore complex || 5: integral to endoplasmic reticulum membrane || 6: ribosome || 7: integral to mitochondrial outer membrane || 8: microtubule basal body || 9: nuclear speck || 10: trans-Golgi network || 11: external side of plasma membrane || 12: sodium channel complex || 13: alveolar lamellar body membrane || 14: lysosomal membrane || 15: B cell receptor complex || 16: membrane raft || 17: multivesicular body || 18: myelin sheath || 19: anchored to membrane || 20: proteinaceous extracellular matrix || 21: compact myelin || 22: calcium channel complex || 23: nuclear envelope || 24: nuclear outer membrane ||

ECM 1, Gene set "Bcl-2 family protein complex", Page 2

Num of ECM Genes: 1. Num of Predicted Genes: 49

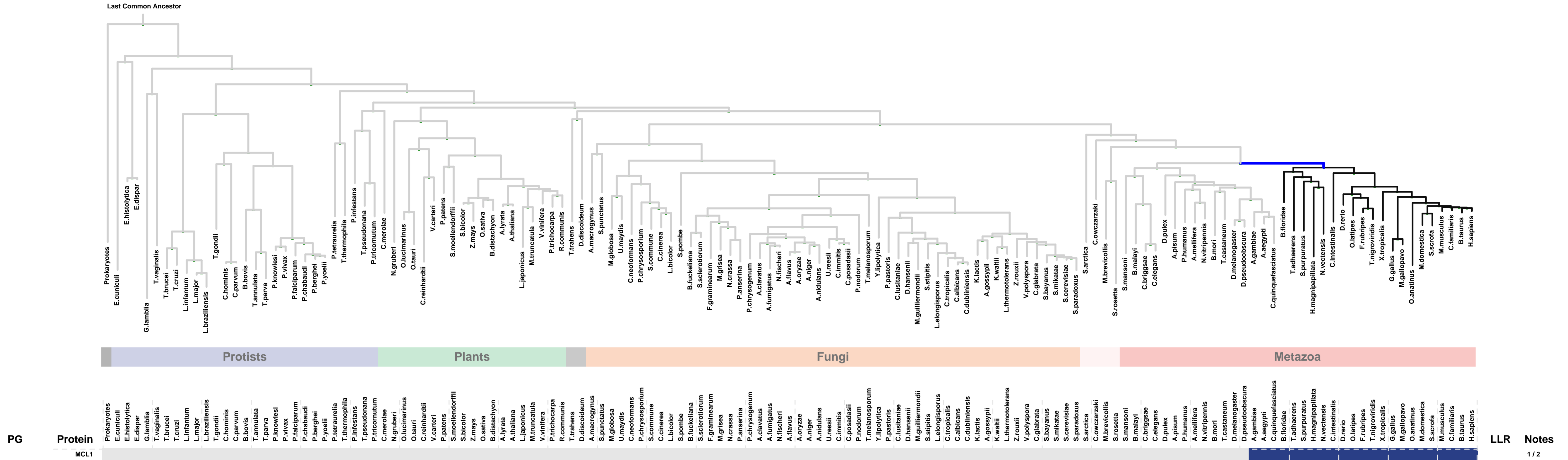


PG	Protein	Prokaryotes	Protists	Plants	Fungi	Metazoa	LLR	Notes
	NDUFA1						1.3	1/2
	CT45A6						1.2	
E	CT45A2						1.2	
E	CT45A3						1.2	
E	CT45A4						1.2	
E	CT45A1						1.2	
A	HHLA2						1.2	
	BCL2L2						1.2	1
	FBXO5						1.2	3
	SLC7A6OS						1.1	4
	TPRG1L						1.0	5
	FCGR3A						0.9	6
	EBA9						0.5	6
	MEA1						0.3	6
	NDPIP2						0.2	7

1: mitochondrial membrane || 2: mitochondrial respiratory chain complex I || 3: spindle || 4: synaptic vesicle || 5: external side of plasma membrane || 6: focal adhesion || 7: multivesicular body membrane

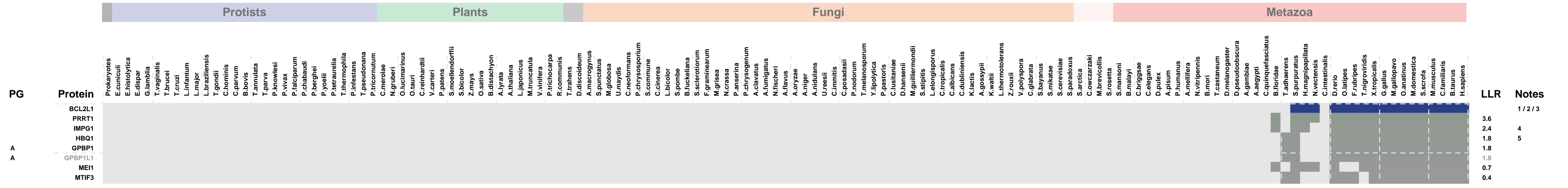
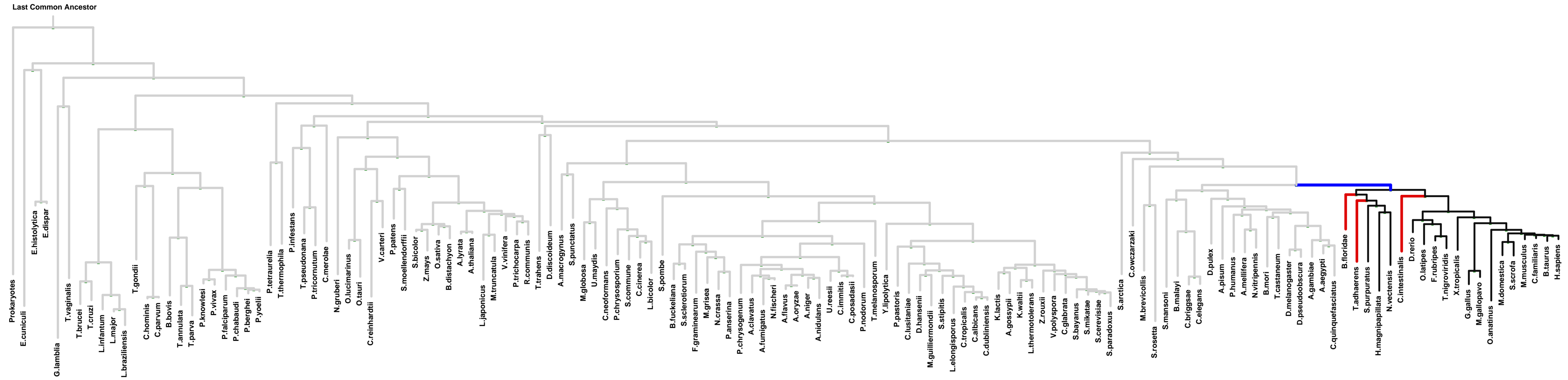
ECM 2, Gene set "Bcl-2 family protein complex", Page 1

Num of ECM Genes: 1. Num of Predicted Genes: 0



ECM 3, Gene set "Bcl-2 family protein complex", Page 1

Num of ECM Genes: 1. Num of Predicted Genes: 7



1: Bcl-2 family protein complex || 2: mitochondrial outer membrane || 3: nuclear membrane || 4: proteinaceous extracellular matrix || 5: hemoglobin complex