

Output results of CLIME (CLustering by Inferred Models of Evolution)

Dataset:

Num of genes in input gene set: 4
Total number of genes: 20834
Prediction LLR threshold: 0

The CLIME PDF output two sections:

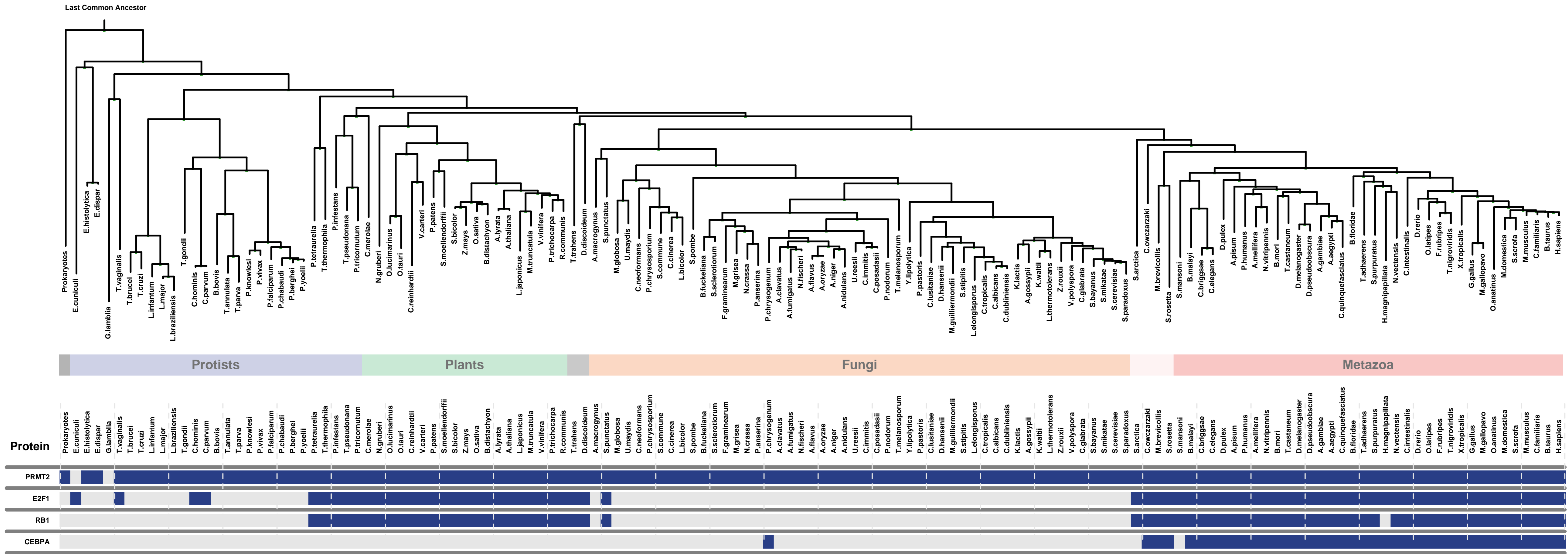
1) Overview of Evolutionarily Conserved Modules (ECMs)

- Top panel shows the predefined species tree.
- Bottom panel shows the partition of input genes into Evolutionary Conserved Modules (ECMs), ordered by ECM strength (shown at right), and separated by horizontal lines.
- Each row show one gene, where the phylogenetic profile indicates presence (blue) or absence (gray) of homologs in each species (column).
- Gene symbols are shown at left. Gray color indicates that the gene is a paralog to a higher scoring gene within the same ECM (based on BLASTP $E < 1e-3$).

2) Details of each ECM and its expansion ECM+

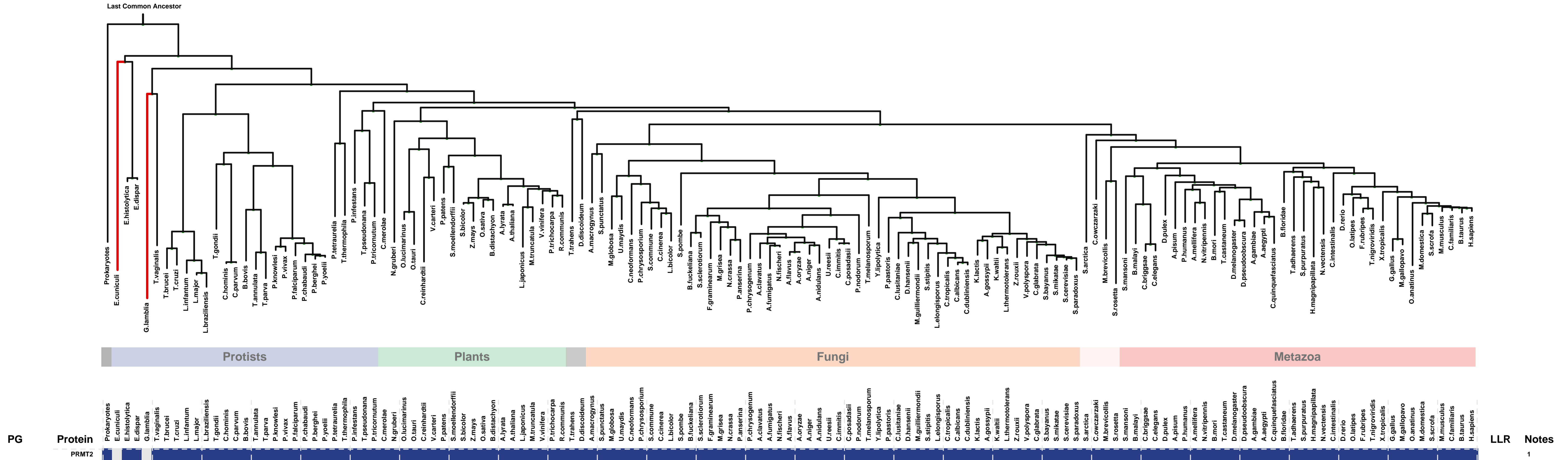
- Top panel shows the inferred evolutionary history on the predefined species tree. Branch color shows the gain event (blue) and loss events (red color, with brighter color indicating higher confidence in loss). Branches before the gain or after a loss are shown in gray.
- Bottom panel shows the input genes that are within the ECM (blue/white rows) as well as all genes in the expanded ECM+ (green/gray rows). The ECM+ includes genes likely to have arisen under the inferred model of evolution relative to a background model, and scored using a log likelihood ratio (LLR).
- PG indicates "paralog group" and are labeled alphabetically (i.e., A, B). The first gene within each paralog group is shown in black color. All other genes sharing sequence similarity (BLAST $E < 1e-3$) are assigned to the same PG label and displayed in gray.

Overview of Evolutionarily Conserved Modules (ECMs)



ECM 1, Gene set "Rb-E2F complex", Page 1

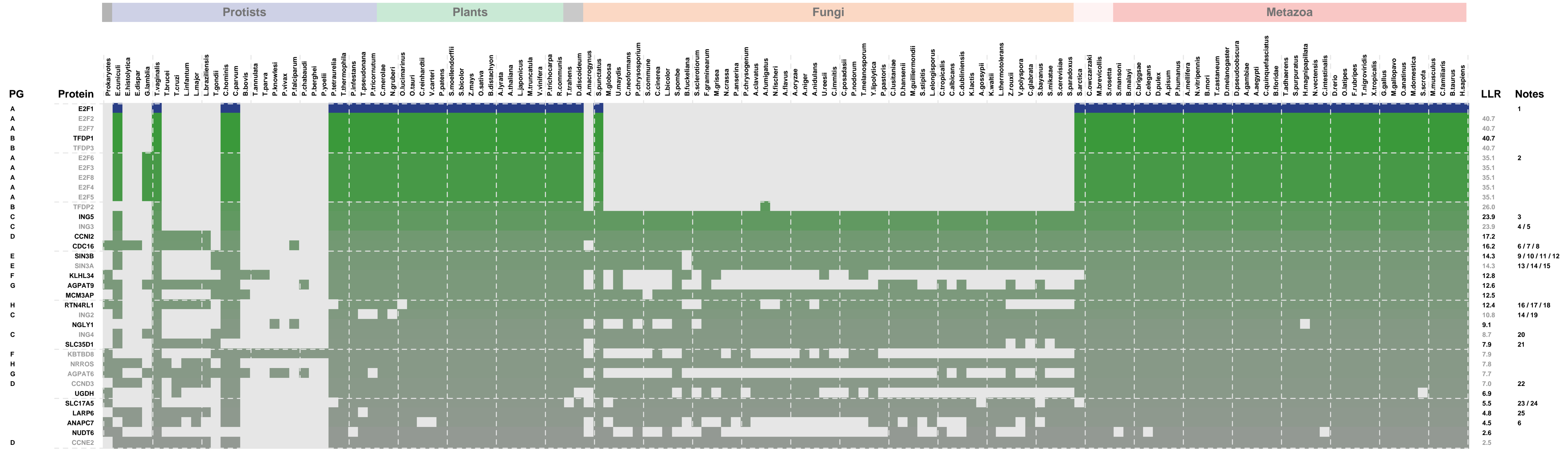
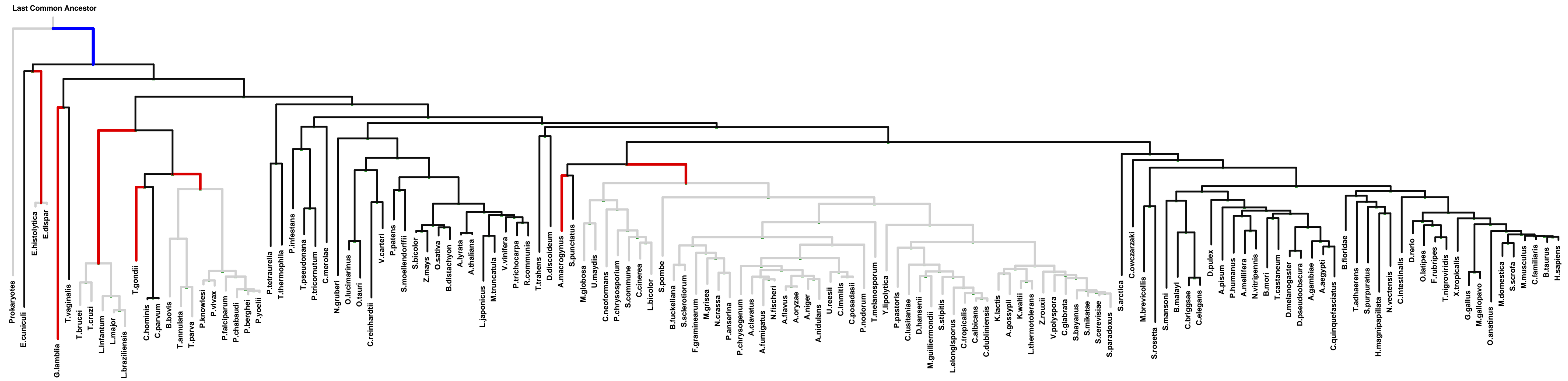
Num of ECM Genes: 1. Num of Predicted Genes: 0



1: Rb-E2F complex

ECM 2, Gene set "Rb-E2F complex", Page 1

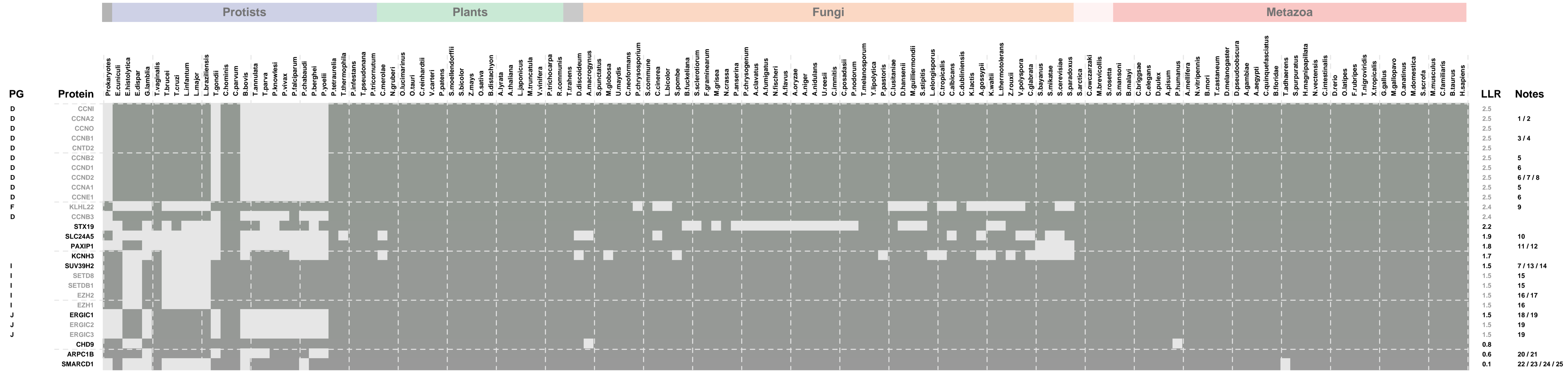
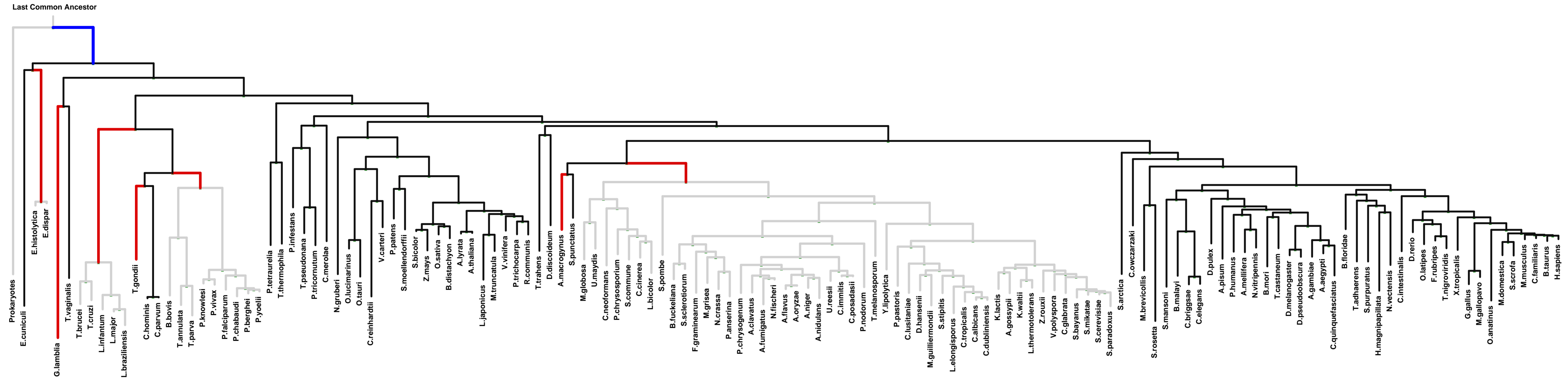
Num of ECM Genes: 1. Num of Predicted Genes: 61



1: Rb-E2F complex || 2: MLL1 complex || 3: MOZ/MORF histone acetyltransferase complex || 4: NuA4 histone acetyltransferase complex || 5: Piccolo NuA4 histone acetyltransferase complex || 6: anaphase-promoting complex || 7: spindle || 8: spindle microtubule || 9: autosome || 10: X chromosome || 11: XY body || 12: Y chromosome || 13: kinetochore || 14: Sin3 complex || 15: transcriptional repressor complex || 16: anchored to plasma membrane || 17: external side of plasma membrane || 18: membrane raft || 19: CCAAT-binding factor complex || 20: histone acetyltransferase complex || 21: integral to endoplasmic reticulum membrane || 22: cyclin-dependent protein kinase holoenzyme complex || 23: cytoplasmic membrane-bounded vesicle ||

ECM 2, Gene set "Rb-E2F complex", Page 2

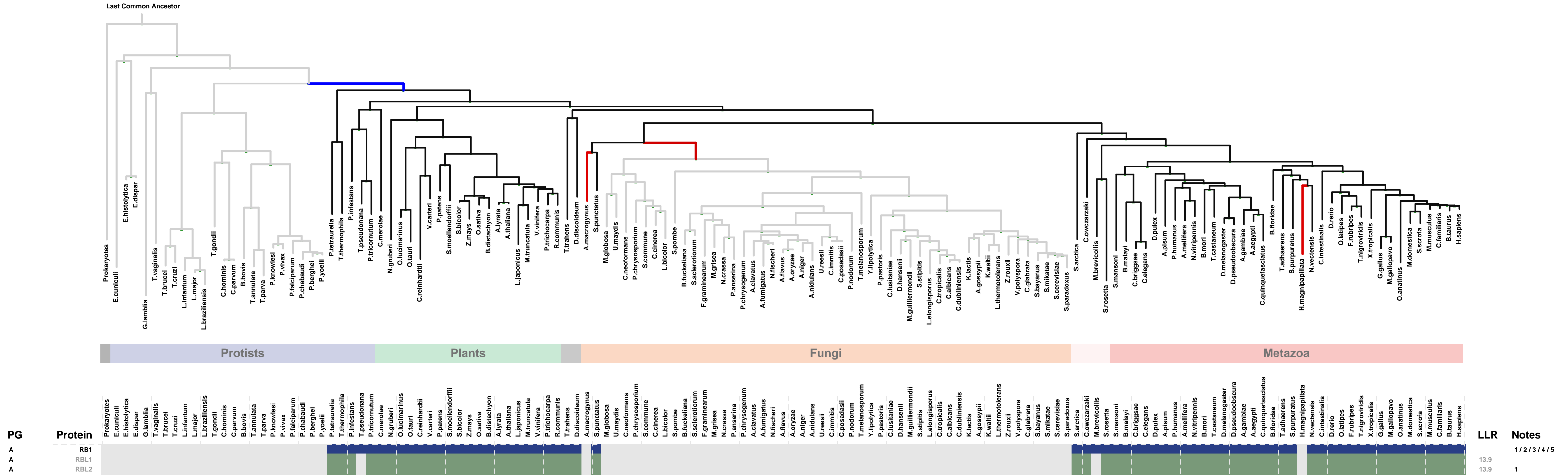
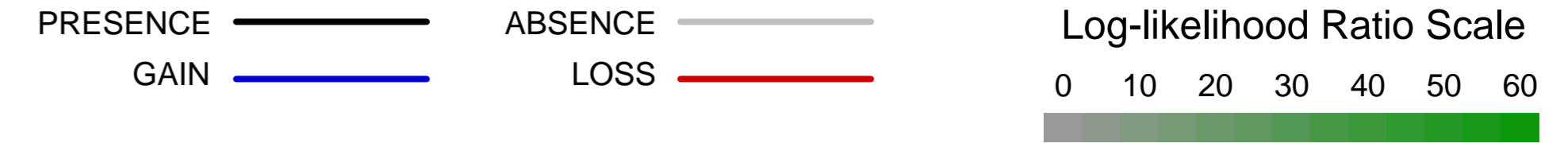
Num of ECM Genes: 1. Num of Predicted Genes: 61



1: female pronucleus || 2: male pronucleus || 3: condensed nuclear chromosome outer kinetochore || 4: spindle pole || 5: microtubule cytoskeleton || 6: cyclin-dependent protein kinase holoenzyme complex || 7: chromatin || 8: nuclear membrane || 9: Cul3-RING ubiquitin ligase complex || 10: melanosome || 11: histone methyltransferase complex || 12: nuclear matrix || 13: chromosome, centromeric region || 14: nuclear heterochromatin || 15: chromosome || 16: ESC/E(Z) complex || 17: pronucleus || 18: endoplasmic reticulum-Golgi intermediate compartment || 19: endoplasmic reticulum-Golgi intermediate compartment membrane || 20: actin cytoskeleton || 21: Arp2/3 protein complex || 22: chromatin remodeling complex || 23: nBAF complex || 24: npBAF complex || 25: SWI/SNF complex

ECM 3, Gene set "Rb-E2F complex", Page 1

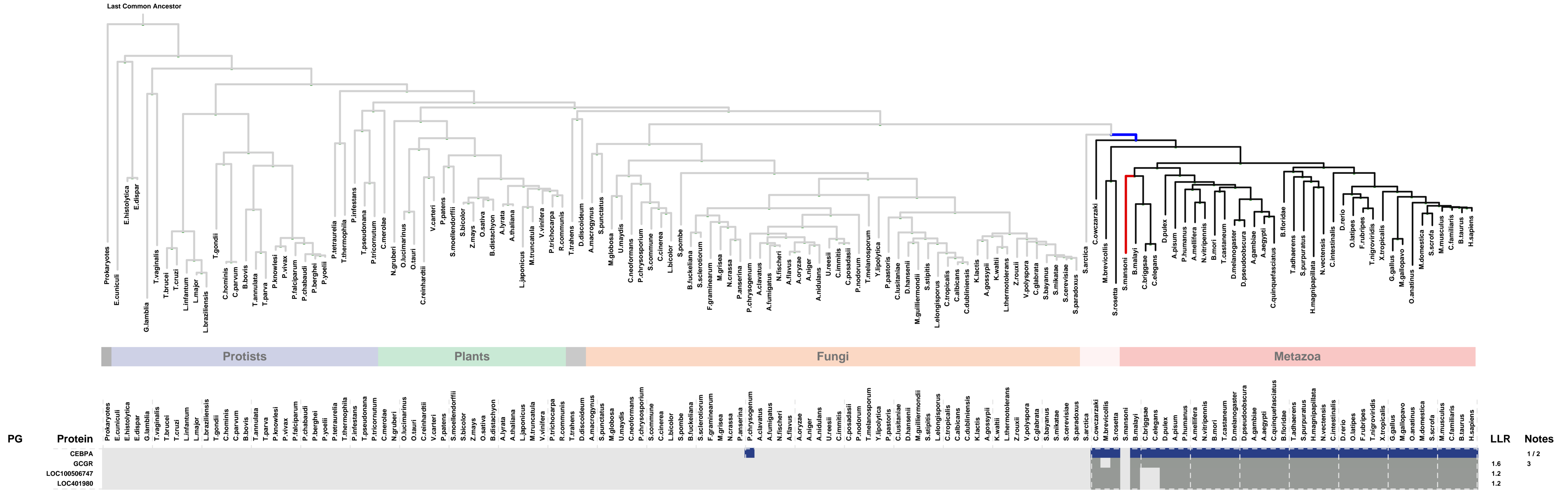
Num of ECM Genes: 1. Num of Predicted Genes: 2



1: chromatin || 2: PML body || 3: Rb-E2F complex || 4: spindle || 5: SWI/SNF complex

ECM 4, Gene set "Rb-E2F complex", Page 1

Num of ECM Genes: 1. Num of Predicted Genes: 3



1: nuclear matrix || 2: Rb-E2F complex || 3: endosome

LLR	Notes
1.6	1/2
1.2	3
1.2	