

Output results of CLIME (CLustering by Inferred Models of Evolution)

Dataset:

Num of genes in input gene set: 7

Total number of genes: 20834

Prediction LLR threshold: 0

The CLIME PDF output two sections:

1) Overview of Evolutionarily Conserved Modules (ECMs)

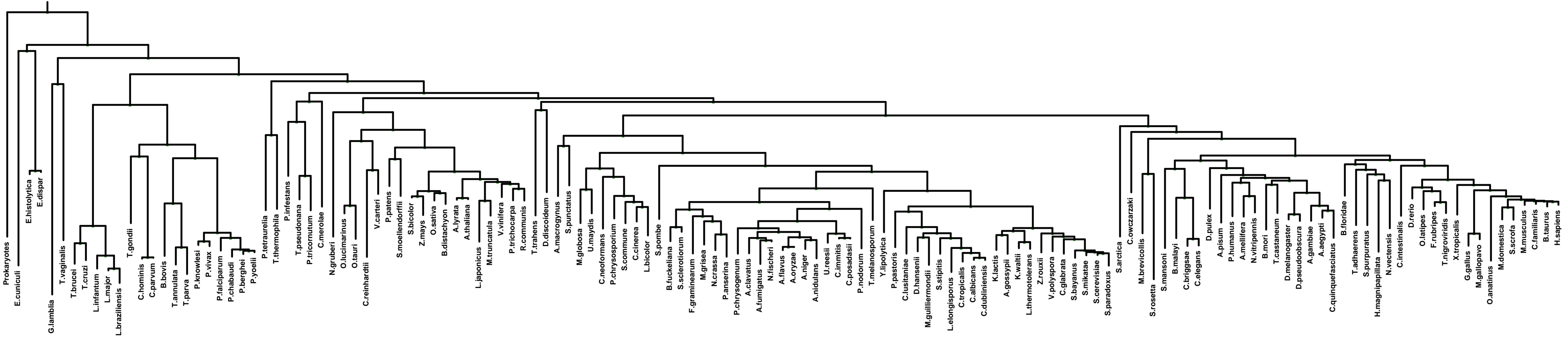
- Top panel shows the predefined species tree.
- Bottom panel shows the partition of input genes into Evolutionary Conserved Modules (ECMs), ordered by ECM strength (shown at right), and separated by horizontal lines.
- Each row show one gene, where the phylogenetic profile indicates presence (blue) or absence (gray) of homologs in each species (column).
- Gene symbols are shown at left. Gray color indicates that the gene is a paralog to a higher scoring gene within the same ECM (based on BLASTP $E < 1e-3$).

2) Details of each ECM and its expansion ECM+

- Top panel shows the inferred evolutionary history on the predefined species tree. Branch color shows the gain event (blue) and loss events (red color, with brighter color indicating higher confidence in loss). Branches before the gain or after a loss are shown in gray.
- Bottom panel shows the input genes that are within the ECM (blue/white rows) as well as all genes in the expanded ECM+ (green/gray rows). The ECM+ includes genes likely to have arisen under the inferred model of evolution relative to a background model, and scored using a log likelihood ratio (LLR).
- PG indicates "paralog group" and are labeled alphabetically (i.e., A, B). The first gene within each paralog group is shown in black color. All other genes sharing sequence similarity (BLAST $E < 1e-3$) are assigned to the same PG label and displayed in gray.

Overview of Evolutionarily Conserved Modules (ECMs)

Last Common Ancestor

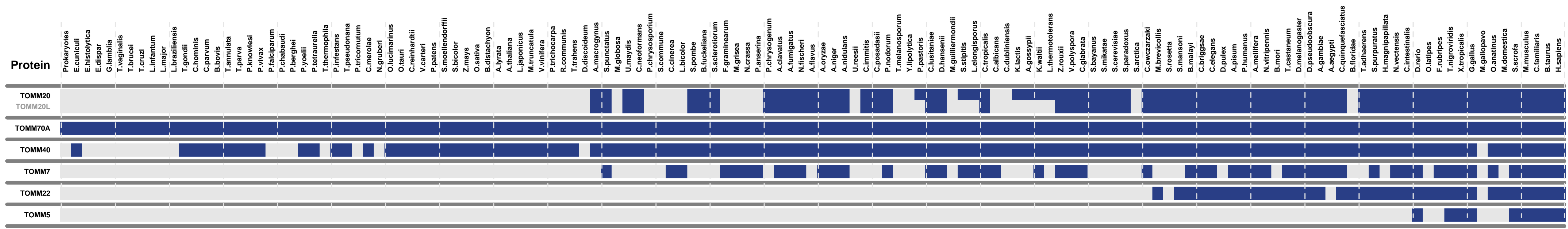


Protists

Plants

Fungi

Metazoa

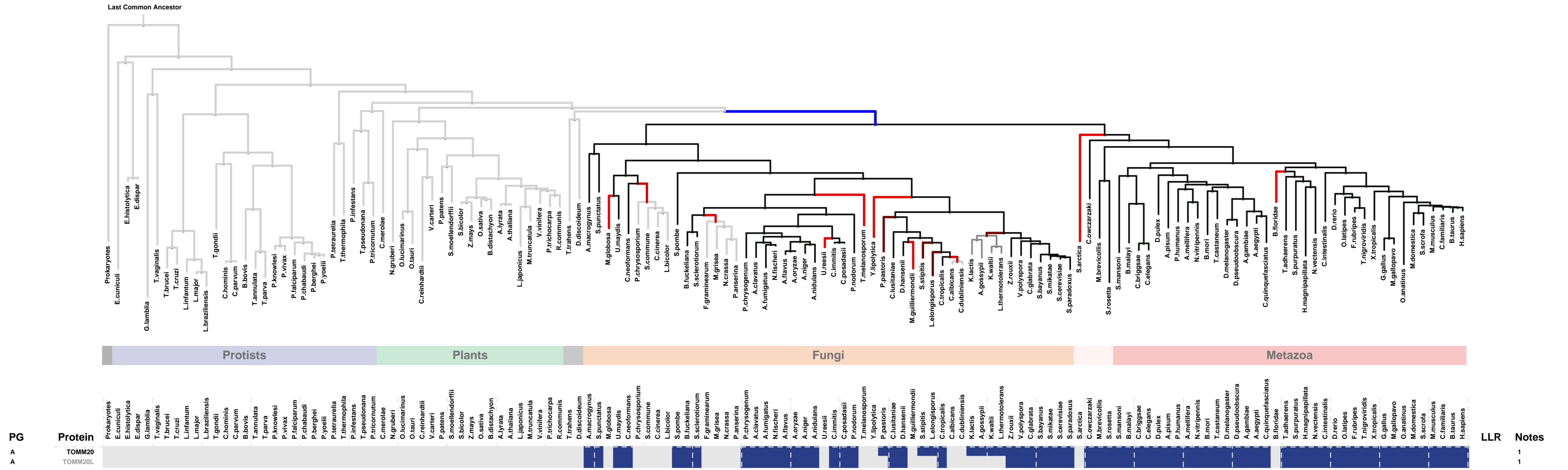


Strength

11.4

ECM 1, Gene set "mitochondrial outer membrane translocase complex", Page 1

Num of ECM Genes: 2. Num of Predicted Genes: 0. ECM Strength: 11.4

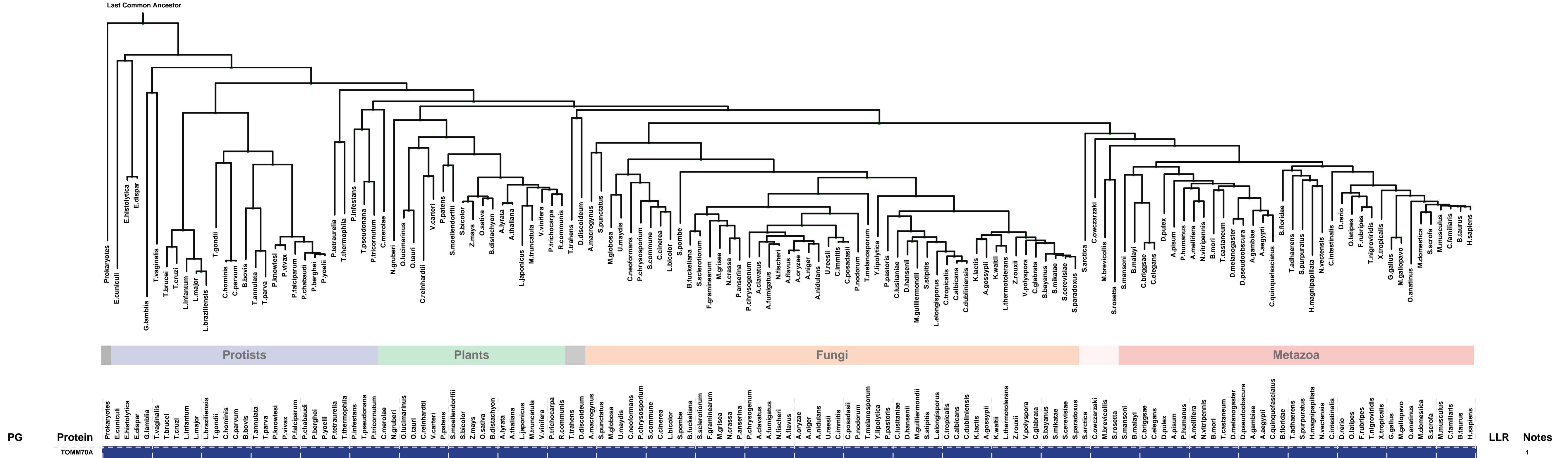


1: mitochondrial outer membrane translocase complex

LLR Notes
1
1

ECM 2, Gene set "mitochondrial outer membrane translocase complex", Page 1

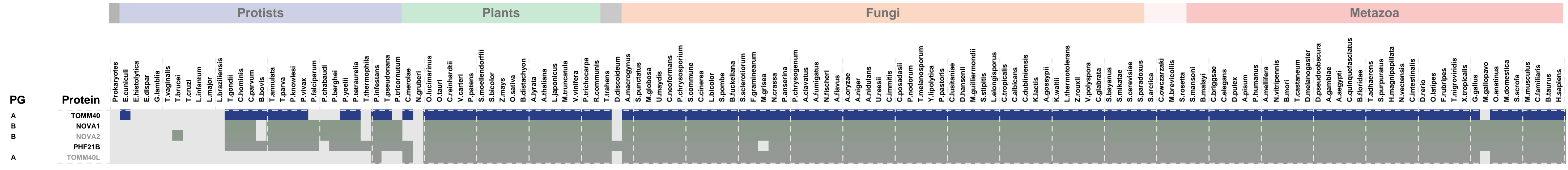
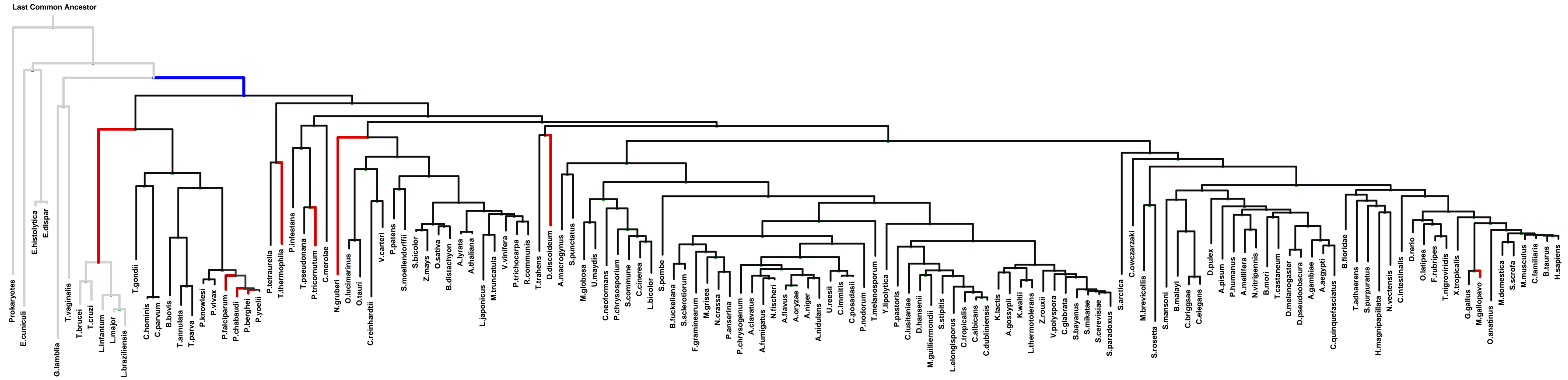
Num of ECM Genes: 1. Num of Predicted Genes: 0



1: mitochondrial outer membrane translocase complex

ECM 3, Gene set "mitochondrial outer membrane translocase complex", Page 1

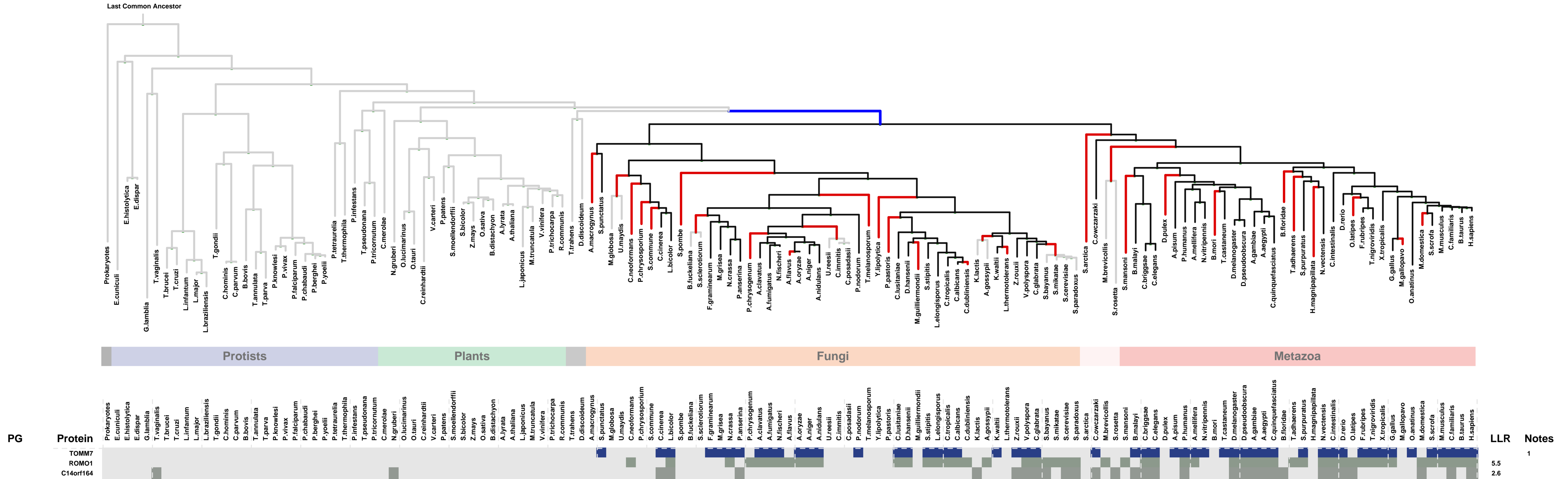
Num of ECM Genes: 1. Num of Predicted Genes: 4



1: integral to mitochondrial outer membrane || 2: mitochondrial outer membrane translocase complex || 3: pore complex || 4: mitochondrial outer membrane

ECM 4, Gene set "mitochondrial outer membrane translocase complex", Page 1

Num of ECM Genes: 1. Num of Predicted Genes: 2

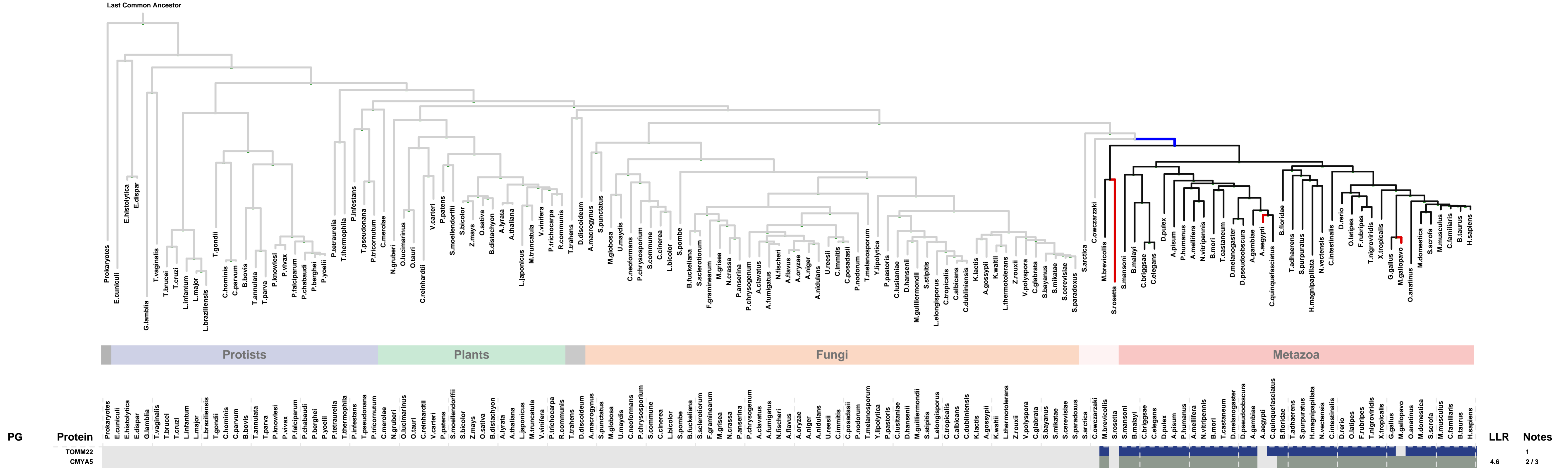
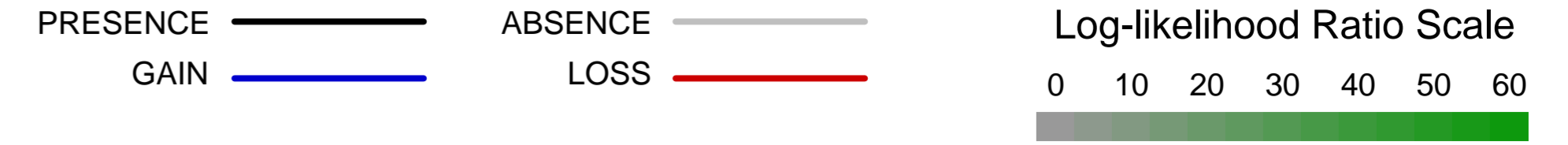


1: mitochondrial outer membrane translocase complex

LLR 1
5.5
2.6

ECM 5, Gene set "mitochondrial outer membrane translocase complex", Page 1

Num of ECM Genes: 1. Num of Predicted Genes: 1

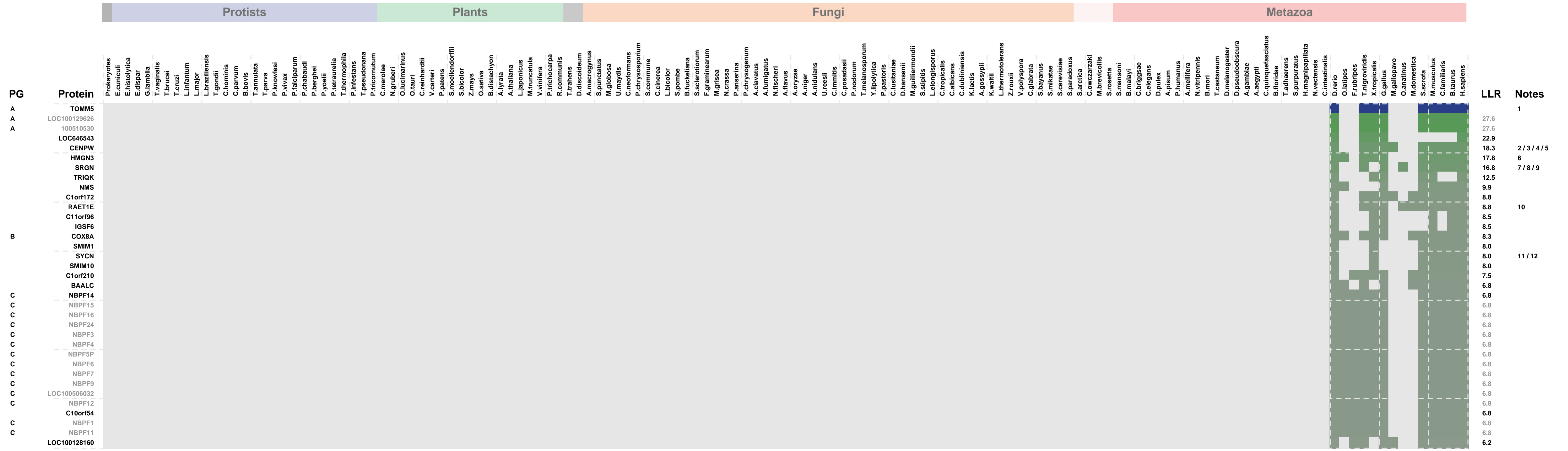
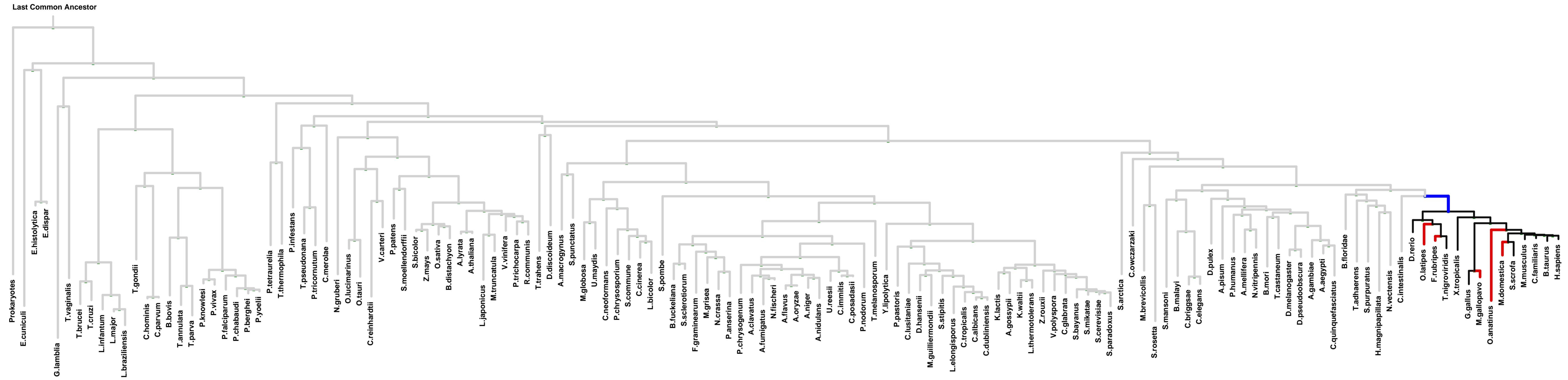


1: mitochondrial outer membrane translocase complex || 2: costamere || 3: M band

PG	Protein	LLR	Notes
TOMM22		4.6	1
CMYA5			2/3

ECM 6, Gene set "mitochondrial outer membrane translocase complex", Page 1

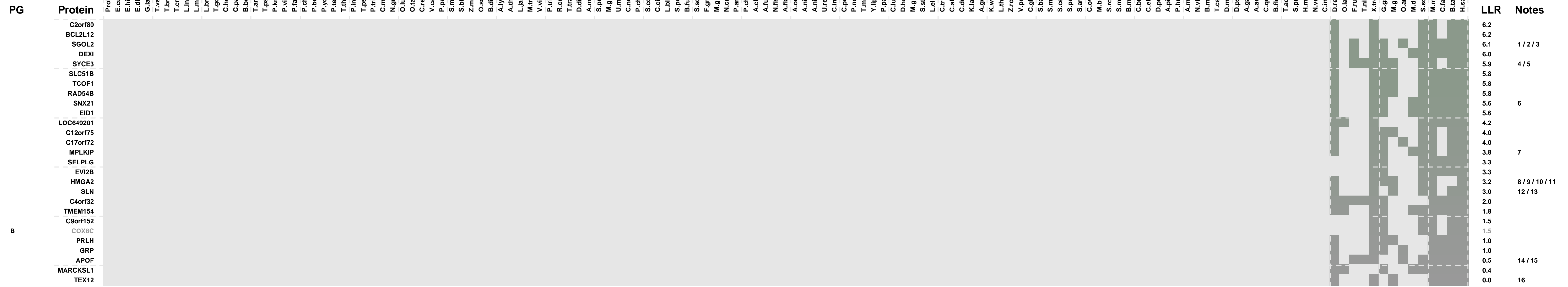
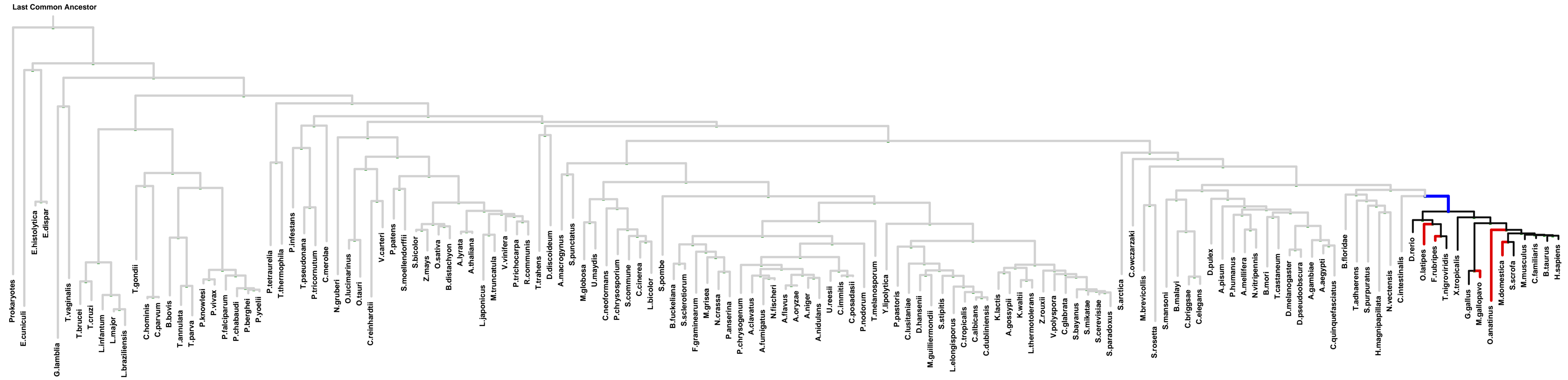
Num of ECM Genes: 1. Num of Predicted Genes: 61



1: mitochondrial outer membrane translocase complex || 2: chromosome, centromeric region || 3: condensed chromosome kinetochore || 4: kinetochore || 5: nuclear matrix || 6: chromatin || 7: mast cell granule || 8: platelet alpha granule lumen || 9: zymogen granule || 10: MHC class I protein complex || 11: secretory granule membrane || 12: transport vesicle membrane

ECM 6, Gene set "mitochondrial outer membrane translocase complex", Page 2

Num of ECM Genes: 1. Num of Predicted Genes: 61



1: chromosome, centromeric region || 2: condensed chromosome kinetochore || 3: mitotic cohesin complex || 4: central element || 5: chromosome || 6: cytoplasmic vesicle membrane || 7: midbody || 8: nuclear chromosome || 9: protein-DNA complex || 10: senescence-associated heterochromatin focus || 11: SMAD protein complex || 12: sarcoplasmic reticulum || 13: sarcoplasmic reticulum membrane || 14: high-density lipoprotein particle || 15: low-density lipoprotein particle || 16: synaptonemal complex