

Output results of CLIME (CLustering by Inferred Models of Evolution)

Dataset:

Num of genes in input gene set: 6

Total number of genes: 20834

Prediction LLR threshold: 0

The CLIME PDF output two sections:

1) Overview of Evolutionarily Conserved Modules (ECMs)

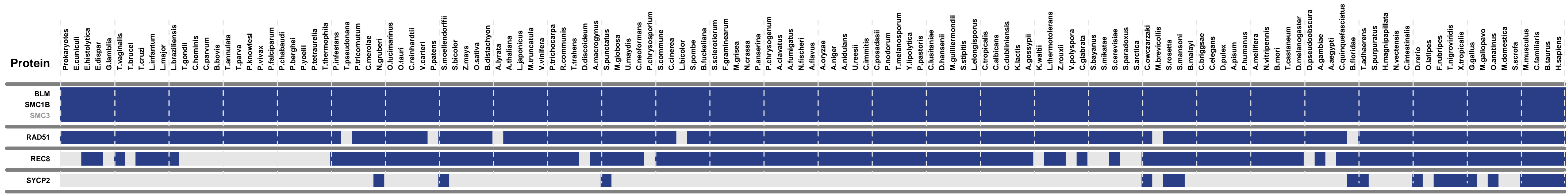
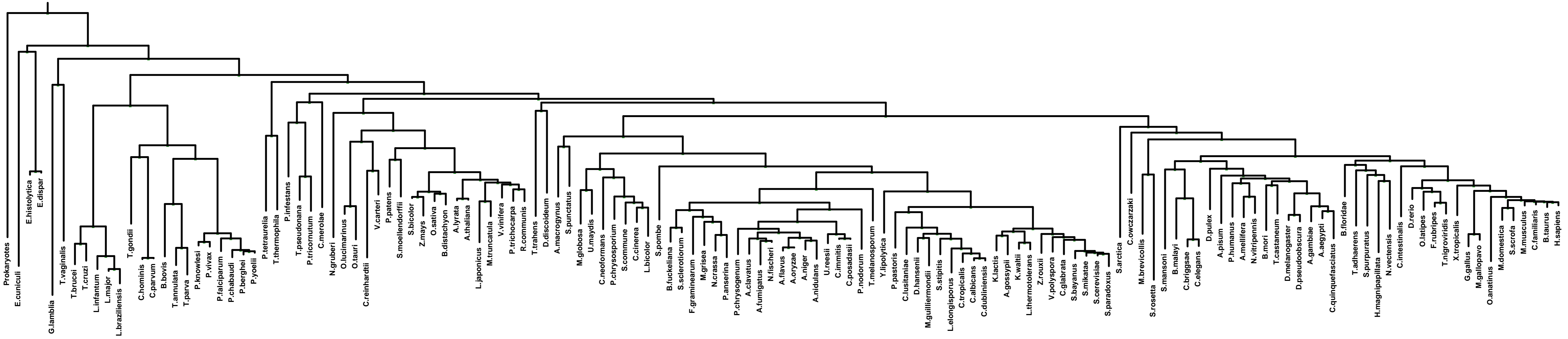
- Top panel shows the predefined species tree.
- Bottom panel shows the partition of input genes into Evolutionary Conserved Modules (ECMs), ordered by ECM strength (shown at right), and separated by horizontal lines.
- Each row show one gene, where the phylogenetic profile indicates presence (blue) or absence (gray) of homologs in each species (column).
- Gene symbols are shown at left. Gray color indicates that the gene is a paralog to a higher scoring gene within the same ECM (based on BLASTP $E < 1e-3$).

2) Details of each ECM and its expansion ECM+

- Top panel shows the inferred evolutionary history on the predefined species tree. Branch color shows the gain event (blue) and loss events (red color, with brighter color indicating higher confidence in loss). Branches before the gain or after a loss are shown in gray.
- Bottom panel shows the input genes that are within the ECM (blue/white rows) as well as all genes in the expanded ECM+ (green/gray rows). The ECM+ includes genes likely to have arisen under the inferred model of evolution relative to a background model, and scored using a log likelihood ratio (LLR).
- PG indicates "paralog group" and are labeled alphabetically (i.e., A, B). The first gene within each paralog group is shown in black color. All other genes sharing sequence similarity (BLAST $E < 1e-3$) are assigned to the same PG label and displayed in gray.

Overview of Evolutionarily Conserved Modules (ECMs)

Last Common Ancestor

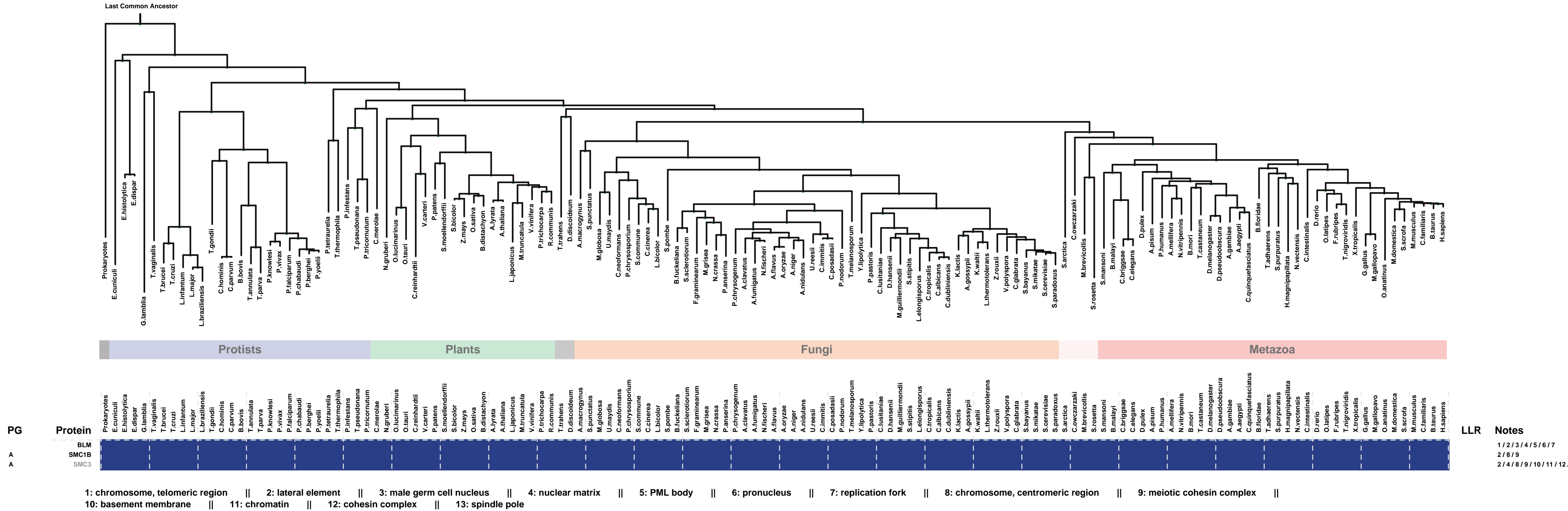


Strength

0.0

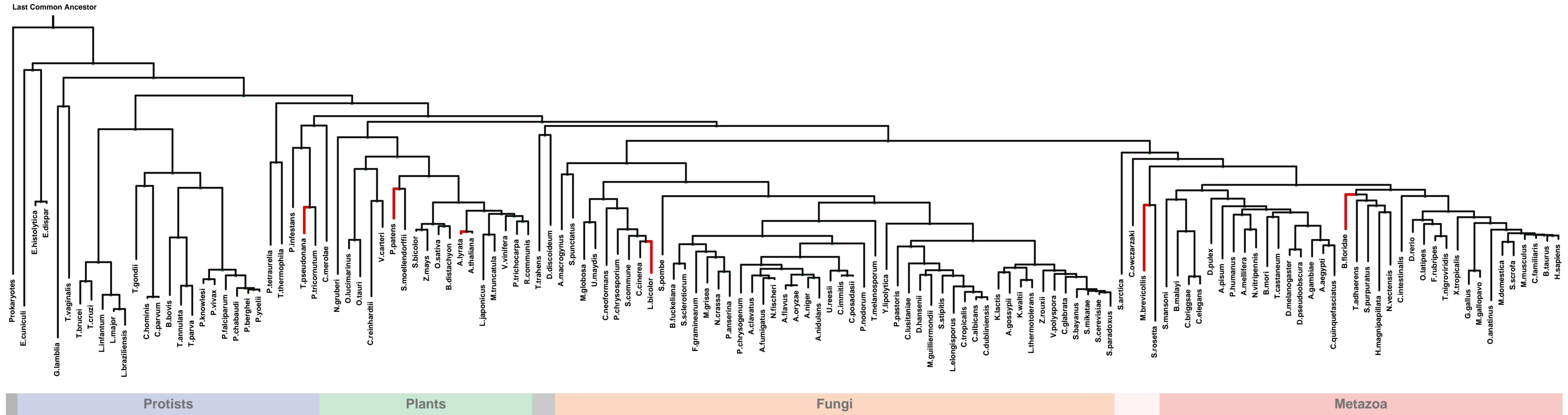
ECM 1, Gene set "lateral element", Page 1

Num of ECM Genes: 3. Num of Predicted Genes: 0. ECM Strength: 0.0



ECM 2, Gene set "lateral element", Page 1

Num of ECM Genes: 1. Num of Predicted Genes: 18

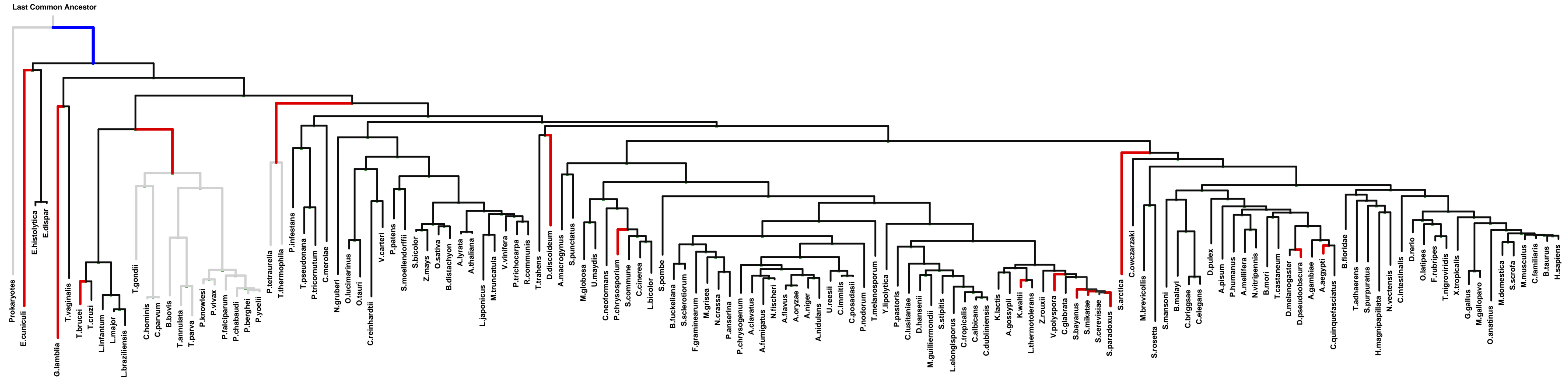


PG	Protein	Prokaryotes	Protists	Plants	Fungi	Metazoa	LLR	Notes
A	RAD51							1/2/3/4
A	DMC1						44.9	2/5/6
A	XRCC3						22.3	
A	RAD51D						21.4	
A	TOP2A						10.5	7/8/9/10
A	XRCC2						9.2	
B	LOC642574						8.7	
B	LOC642574						8.7	
B	100508128						8.7	
C	RSL24D1P11						4.3	
C	XRN1						3.9	11
C	XRN2						2.6	12
C	PSMD4						1.8	13/14
C	TTC33						1.5	
C	SF3A3						1.4	15/16/17
D	GTF2H2C						0.4	
D	GTF2H2D						0.4	
D	GTF2H2						0.4	18
D	100510744						0.4	

1: condensed chromosome || 2: condensed nuclear chromosome || 3: lateral element || 4: PML body || 5: chromosome || 6: chromosome, telomeric region || 7: centriole || 8: nuclear chromosome || 9: nucleoid || 10: synaptonemal complex || 11: intermediate filament cytoskeleton || 12: aggresome || 13: proteasome accessory complex || 14: proteasome complex || 15: catalytic step 2 spliceosome || 16: nuclear speck || 17: spliceosomal complex || 18: holo TFIID complex

ECM 3, Gene set "lateral element", Page 1

Num of ECM Genes: 1. Num of Predicted Genes: 4

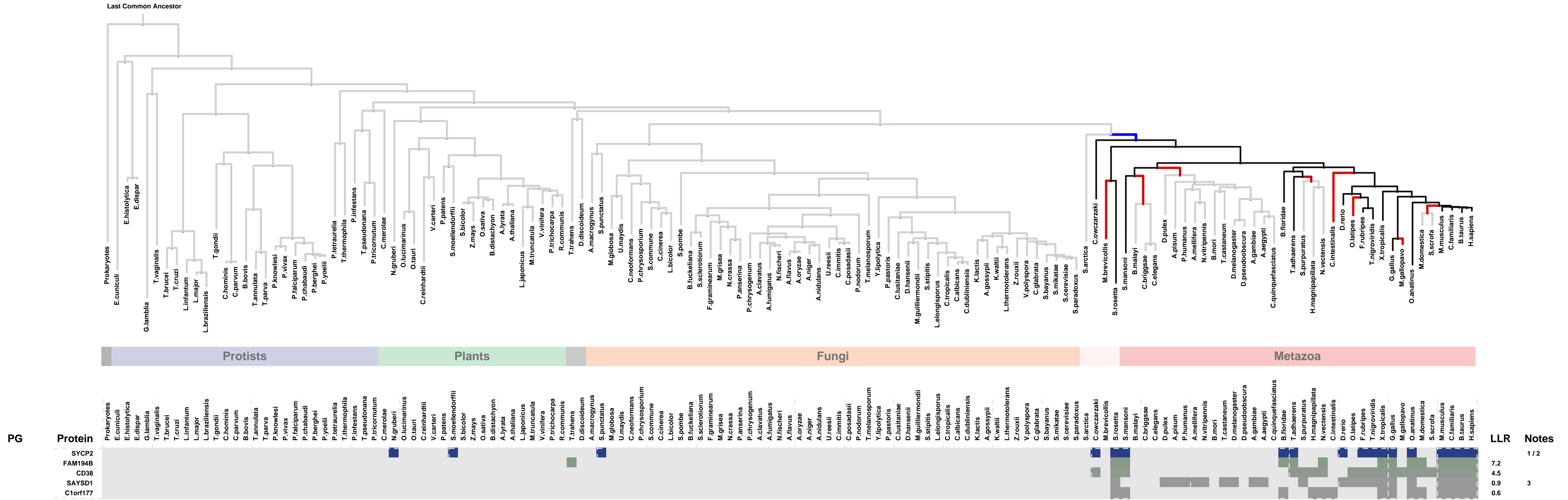


PG	Protein	Prokaryotes	Protists	Plants	Fungi	Metazoa	LLR	Notes
A	REC8							1 / 2 / 3 / 4
A	RAD21						14.0	5 / 6 / 7
A	RAD21L1						14.0	4 / 7 / 8
	SLC37A4						6.7	9
	SCAMP1						0.9	10 / 11

1: condensed nuclear chromosome, centromeric region || 2: lateral element || 3: male germ cell nucleus || 4: meiotic cohesin complex || 5: chromosome, centromeric region || 6: cohesin complex || 7: nuclear chromosome || 8: chromosome || 9: integral to endoplasmic reticulum membrane || 10: recycling endosome membrane || 11: trans-Golgi network

ECM 4, Gene set "lateral element", Page 1

Num of ECM Genes: 1. Num of Predicted Genes: 4



1: lateral element || 2: synaptonemal complex || 3: cytoplasmic vesicle membrane