

Output results of CLIME (CLustering by Inferred Models of Evolution)

Dataset:

Num of genes in input gene set: 18
Total number of genes: 20834
Prediction LLR threshold: 0

The CLIME PDF output two sections:

1) Overview of Evolutionarily Conserved Modules (ECMs)

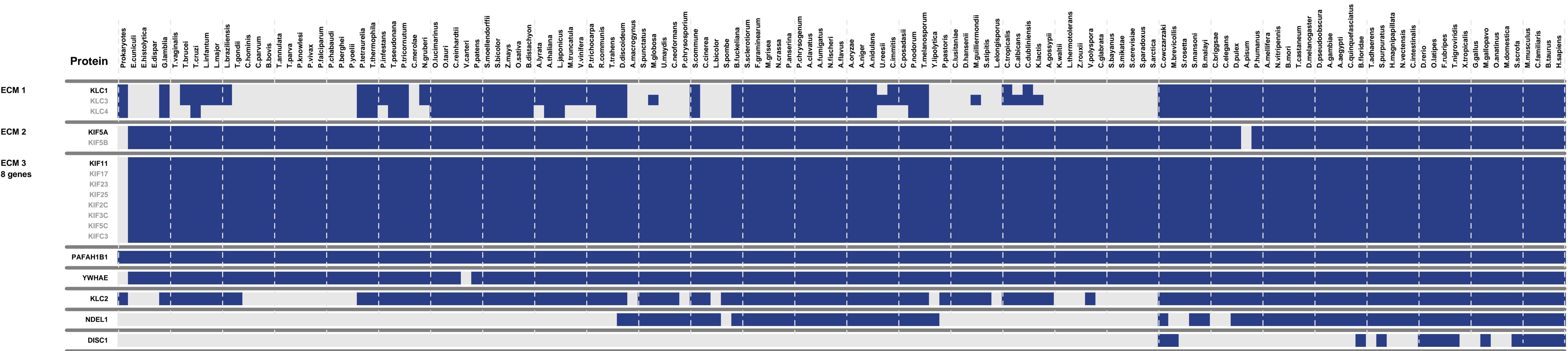
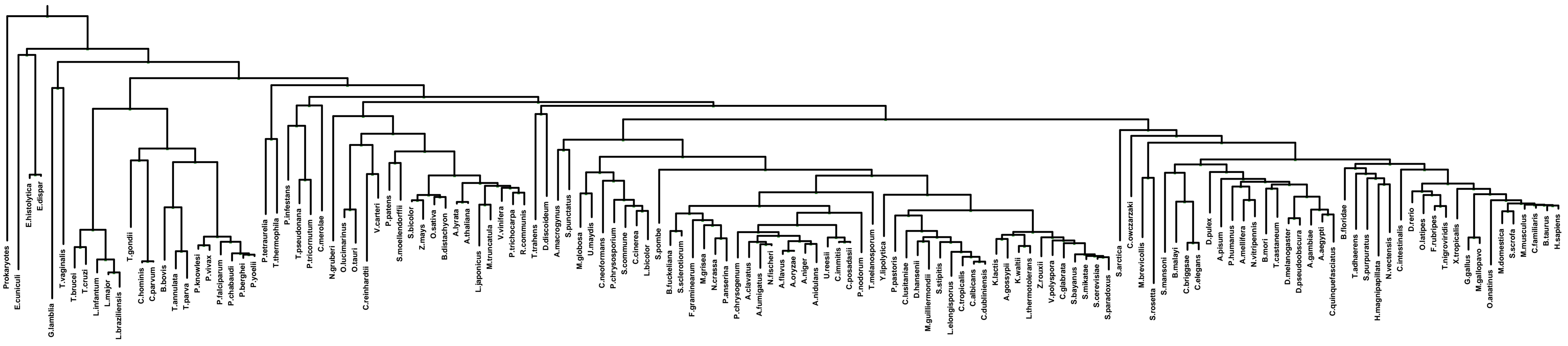
- Top panel shows the predefined species tree.
- Bottom panel shows the partition of input genes into Evolutionary Conserved Modules (ECMs), ordered by ECM strength (shown at right), and separated by horizontal lines.
- Each row show one gene, where the phylogenetic profile indicates presence (blue) or absence (gray) of homologs in each species (column).
- Gene symbols are shown at left. Gray color indicates that the gene is a paralog to a higher scoring gene within the same ECM (based on BLASTP $E < 1e-3$).

2) Details of each ECM and its expansion ECM+

- Top panel shows the inferred evolutionary history on the predefined species tree. Branch color shows the gain event (blue) and loss events (red color, with brighter color indicating higher confidence in loss). Branches before the gain or after a loss are shown in gray.
- Bottom panel shows the input genes that are within the ECM (blue/white rows) as well as all genes in the expanded ECM+ (green/gray rows). The ECM+ includes genes likely to have arisen under the inferred model of evolution relative to a background model, and scored using a log likelihood ratio (LLR).
- PG indicates "paralog group" and are labeled alphabetically (i.e., A, B). The first gene within each paralog group is shown in black color. All other genes sharing sequence similarity (BLAST $E < 1e-3$) are assigned to the same PG label and displayed in gray.

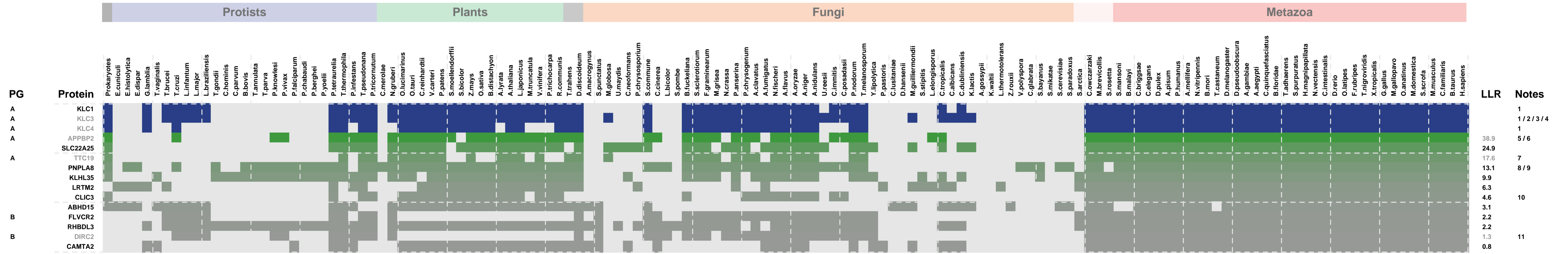
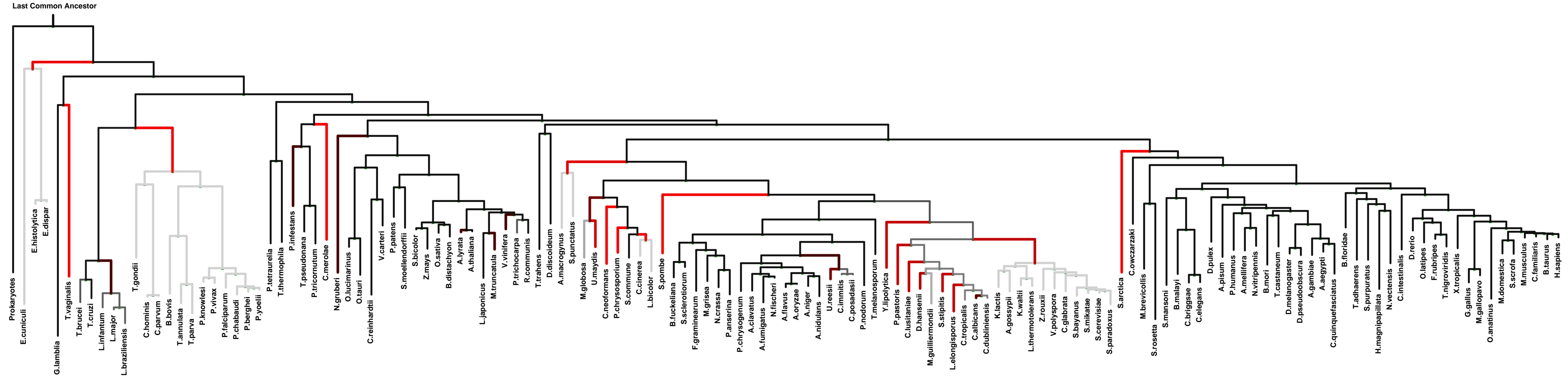
Overview of Evolutionarily Conserved Modules (ECMs)

Last Common Ancestor



ECM 1, Gene set "kinesin complex", Page 1

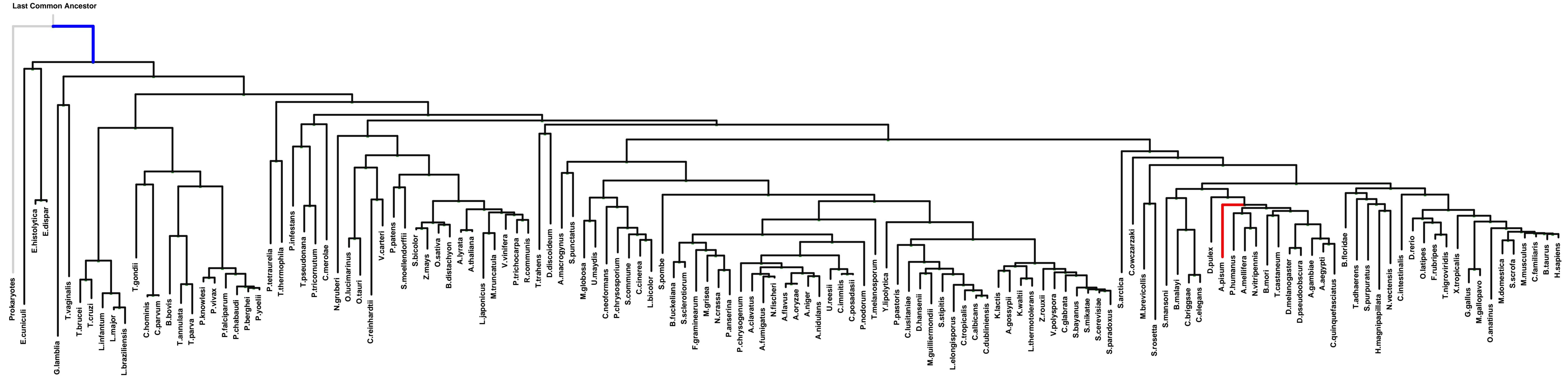
Num of ECM Genes: 3. Num of Predicted Genes: 12. ECM Strength: 8.2



1: kinesin complex || 2: ciliary rootlet || 3: microtubule-based flagellum || 4: neuron projection || 5: cytoplasmic vesicle membrane || 6: microtubule associated complex || 7: midbody || 8: peroxisomal membrane || 9: peroxisome || 10: chloride channel complex || 11: lysosomal membrane

ECM 2, Gene set "kinesin complex", Page 1

Num of ECM Genes: 2. Num of Predicted Genes: 0. ECM Strength: 0.0

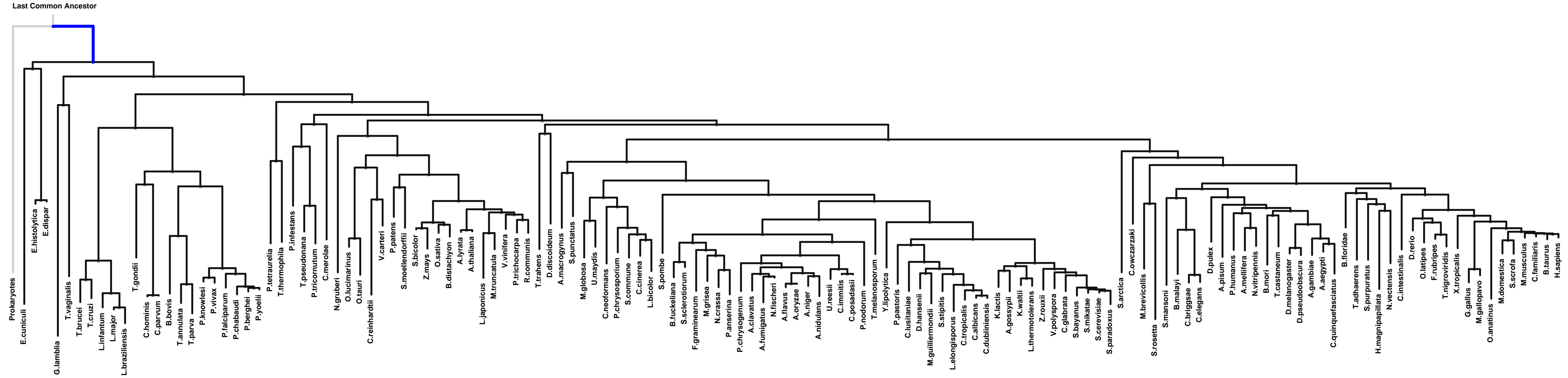


PG	Protein	LLR	Notes
A	KIF5A		1/2/3
A	KIF5B		2/3/4/5

1: axon part || 2: ciliary rootlet || 3: kinesin complex || 4: neuron projection || 5: vesicle

ECM 3, Gene set "kinesin complex", Page 1

Num of ECM Genes: 8. Num of Predicted Genes: 0. ECM Strength: 0.0

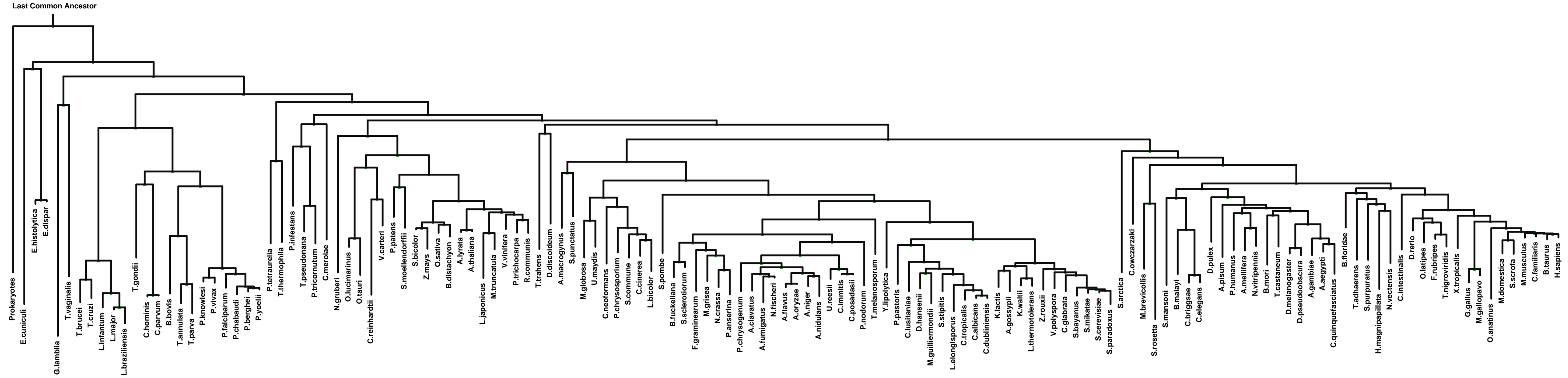
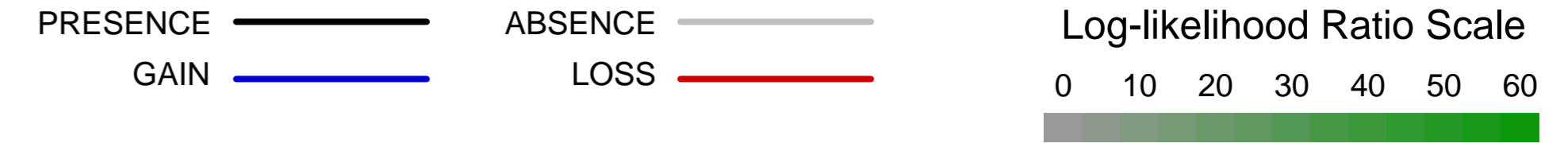


PG	Protein	Prokaryotes	Protists	Plants	Fungi	Metazoa	LLR	Notes
A	KIF11							1/2/3/4/5
A	KIF17							2
A	KIF23							2/3/6/7/8/9
A	KIF25							2
A	KIF2C							2/10/11/12/13/14
A	KIF3C							2
A	KIF5C							2/15/16
A	KIFC3							2/17/18

1: chromatin remodeling complex || 2: kinesin complex || 3: spindle || 4: spindle microtubule || 5: spindle pole || 6: centralspindlin complex || 7: intercellular bridge || 8: midbody || 9: mitotic spindle || 10: chromosome, centromeric region || 11: condensed chromosome kinetochore || 12: cytoplasmic microtubule || 13: kinetochore || 14: microtubule cytoskeleton || 15: ciliary rootlet || 16: neuron projection || 17: cytoplasmic vesicle membrane || 18: zonula adherens

ECM 4, Gene set "kinesin complex", Page 1

Num of ECM Genes: 1. Num of Predicted Genes: 0



Protists

Plants

Fungi

Metazoa

PG

Protein



LLR Notes

1/2/3/4/5/6/7/8/9/10/11

- 1: axon part || 2: cell cortex || 3: cell leading edge || 4: growth cone || 5: kinesin complex || 6: kinetochore || 7: microtubule associated complex || 8: motile primary cilium || 9: nonmotile primary cilium || 10: nuclear envelope || 11: nuclear membrane

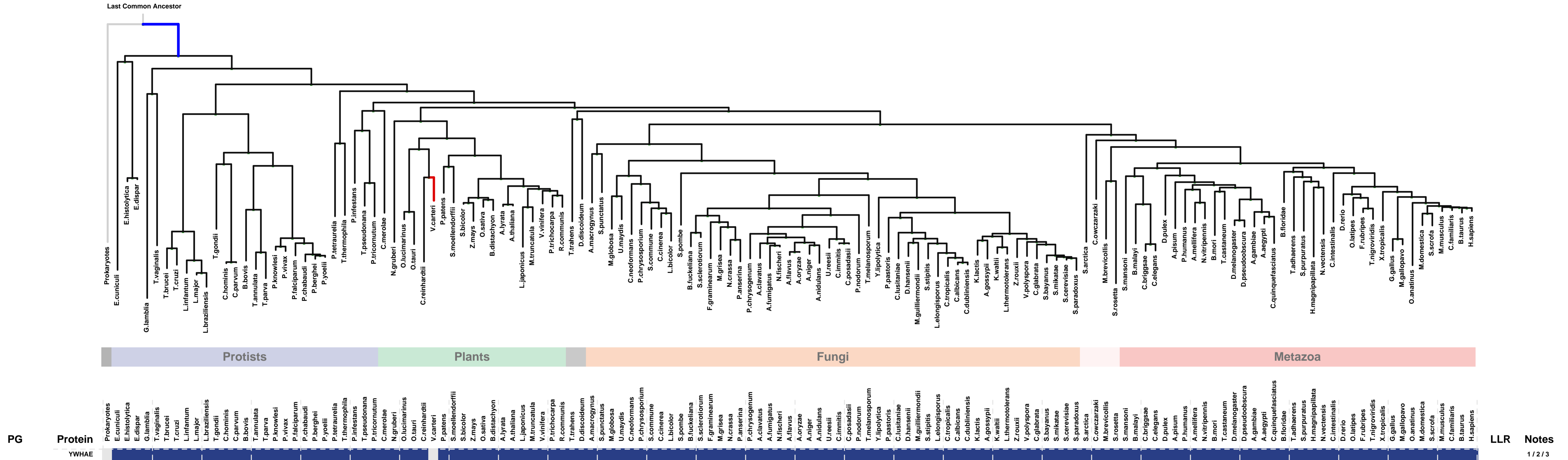
ECM 5, Gene set "kinesin complex", Page 1

Num of ECM Genes: 1. Num of Predicted Genes: 0

PRESENCE ——— ABSENCE ———
GAIN ——— LOSS ———

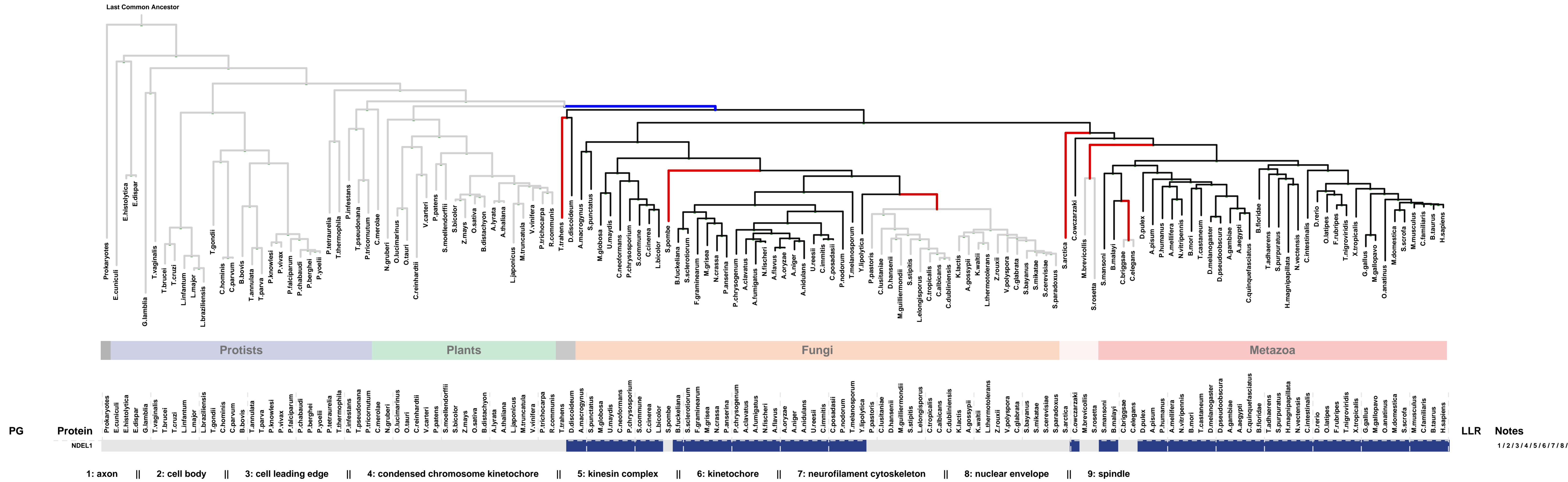
Log-likelihood Ratio Scale

0 10 20 30 40 50 60



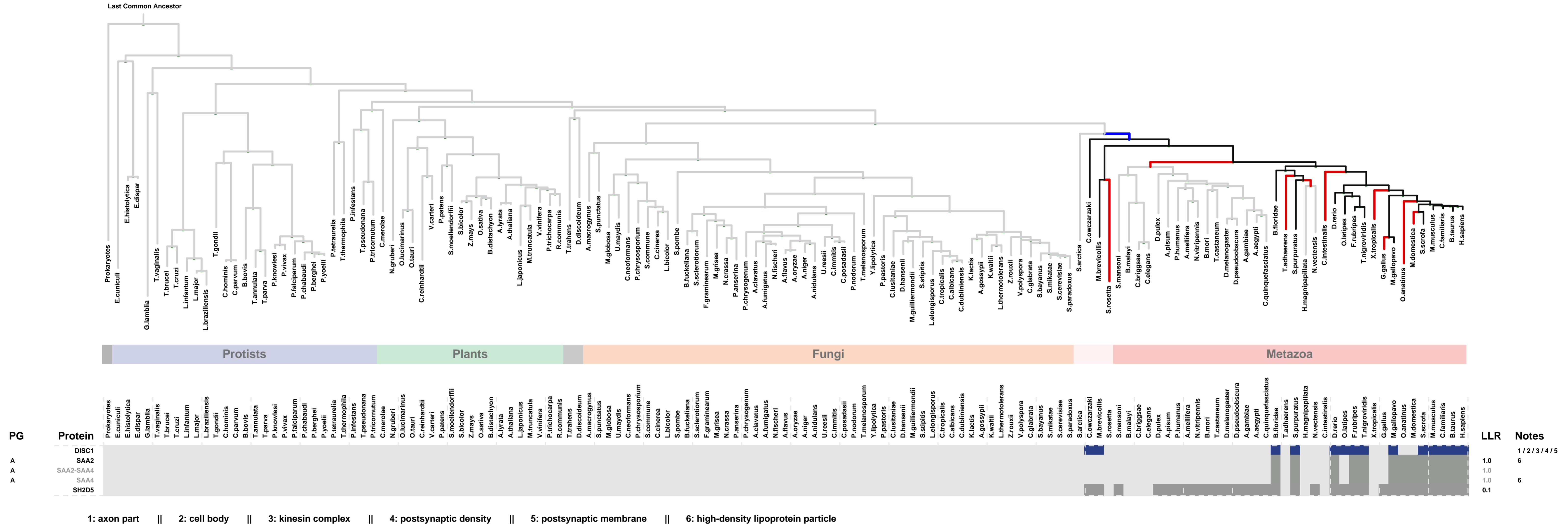
ECM 7, Gene set "kinesin complex", Page 1

Num of ECM Genes: 1. Num of Predicted Genes: 0



ECM 8, Gene set "kinesin complex", Page 1

Num of ECM Genes: 1. Num of Predicted Genes: 4



LLR	Notes
1.0	1/2/3/4/5
1.0	6
1.0	6
0.1	