

# Output results of CLIME (CLustering by Inferred Models of Evolution)

## Dataset:

Num of genes in input gene set: 9  
Total number of genes: 20834  
Prediction LLR threshold: 0

The CLIME PDF output two sections:

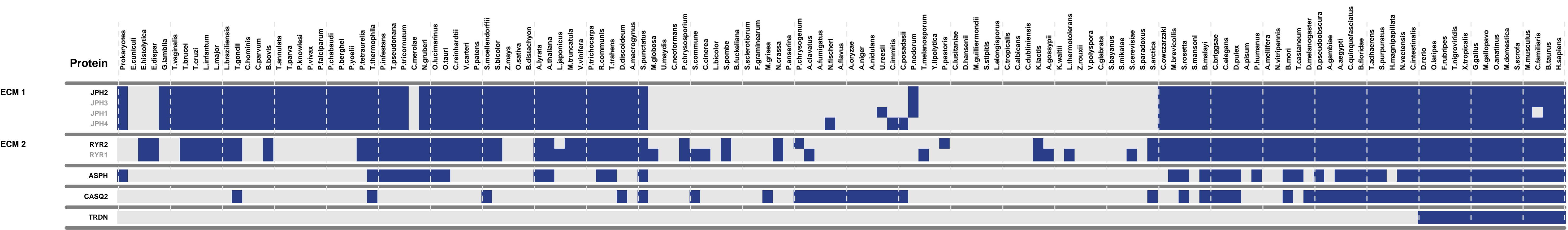
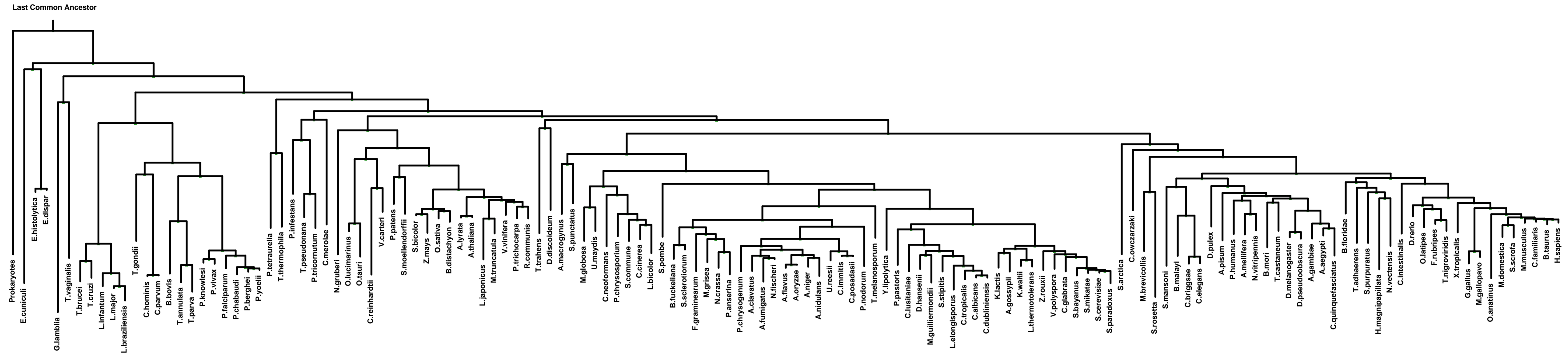
### 1) Overview of Evolutionarily Conserved Modules (ECMs)

- Top panel shows the predefined species tree.
- Bottom panel shows the partition of input genes into Evolutionary Conserved Modules (ECMs), ordered by ECM strength (shown at right), and separated by horizontal lines.
- Each row show one gene, where the phylogenetic profile indicates presence (blue) or absence (gray) of homologs in each species (column).
- Gene symbols are shown at left. Gray color indicates that the gene is a paralog to a higher scoring gene within the same ECM (based on BLASTP  $E < 1e-3$ ).

### 2) Details of each ECM and its expansion ECM+

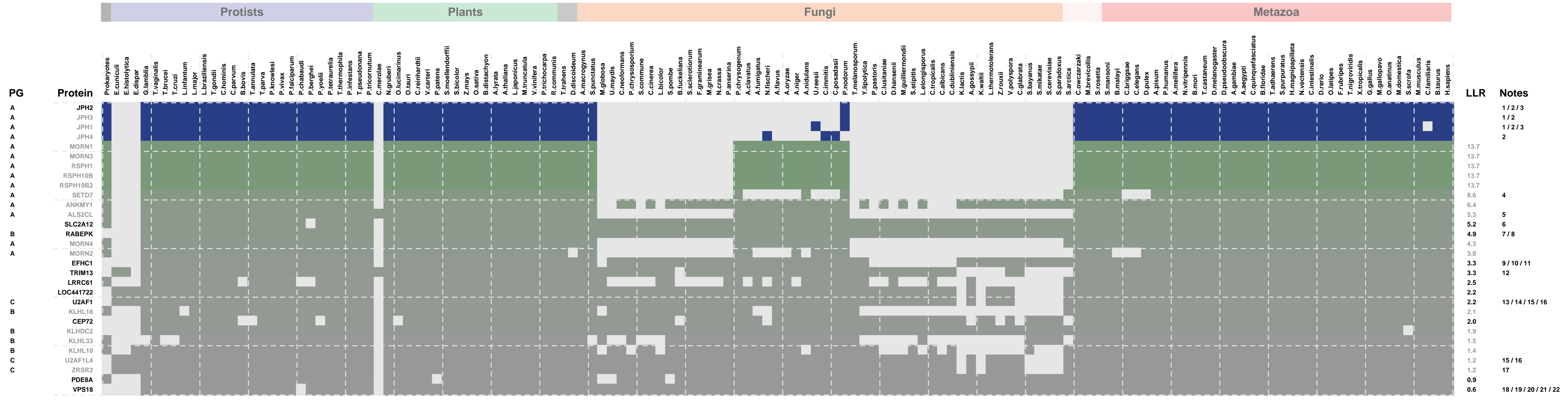
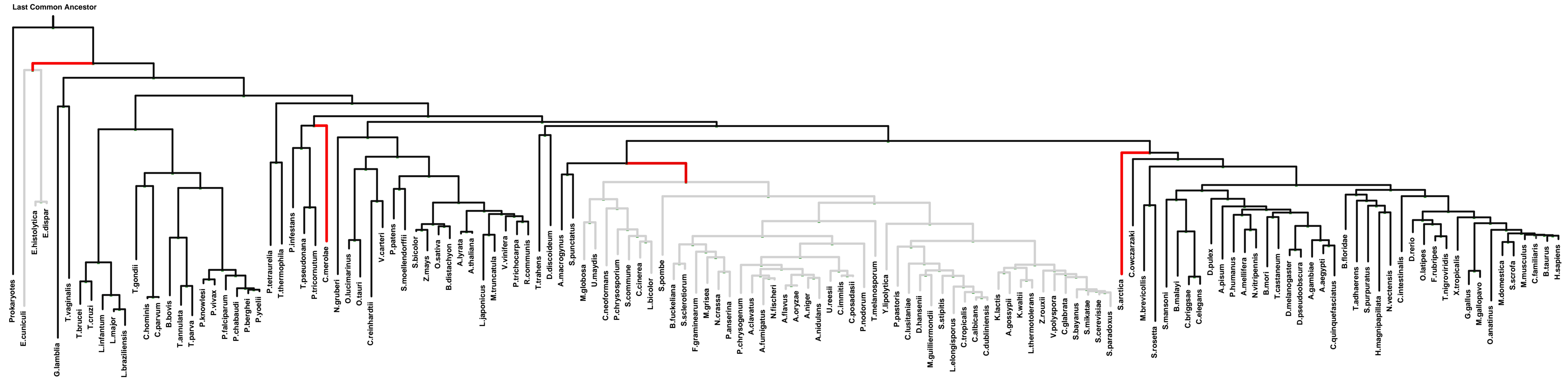
- Top panel shows the inferred evolutionary history on the predefined species tree. Branch color shows the gain event (blue) and loss events (red color, with brighter color indicating higher confidence in loss). Branches before the gain or after a loss are shown in gray.
- Bottom panel shows the input genes that are within the ECM (blue/white rows) as well as all genes in the expanded ECM+ (green/gray rows). The ECM+ includes genes likely to have arisen under the inferred model of evolution relative to a background model, and scored using a log likelihood ratio (LLR).
- PG indicates "paralog group" and are labeled alphabetically (i.e., A, B). The first gene within each paralog group is shown in black color. All other genes sharing sequence similarity (BLAST  $E < 1e-3$ ) are assigned to the same PG label and displayed in gray.

# Overview of Evolutionarily Conserved Modules (ECMs)



# ECM 1, Gene set "junctional sarcoplasmic reticulum membrane", Page 1

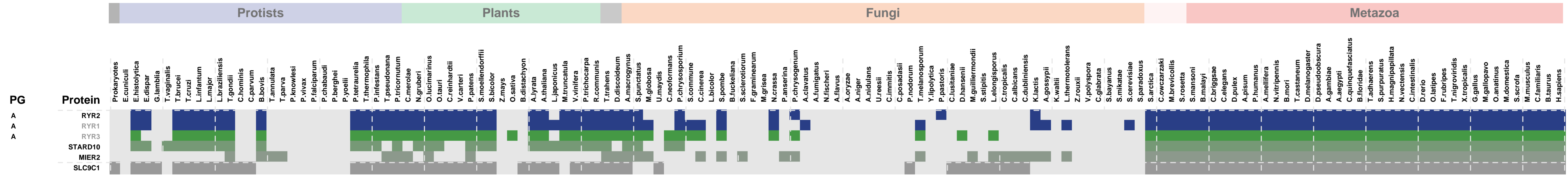
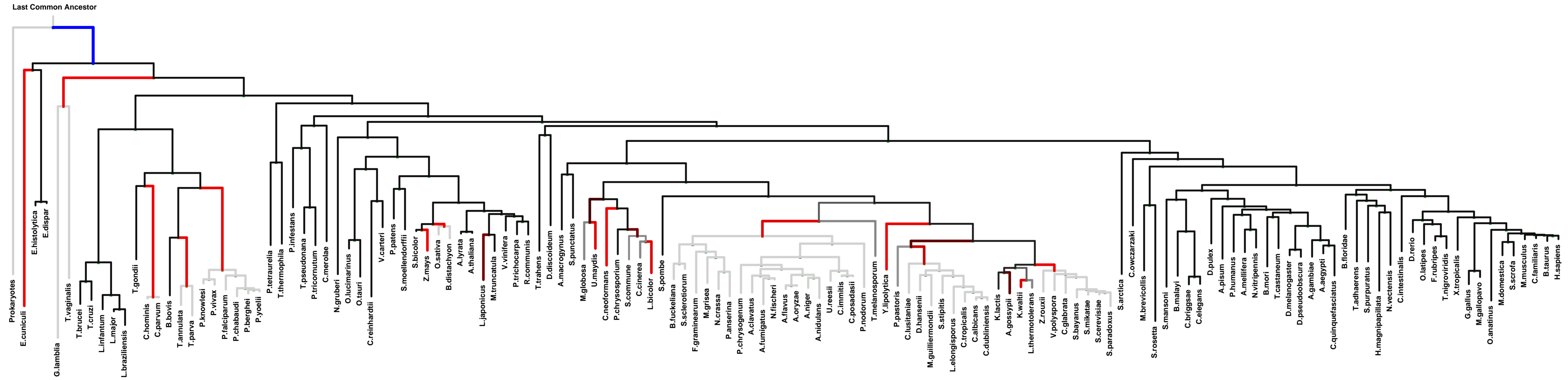
Num of ECM Genes: 4. Num of Predicted Genes: 26. ECM Strength: 8.7



1: junctional membrane complex || 2: junctional sarcoplasmic reticulum membrane || 3: Z disc || 4: chromosome || 5: cytoplasmic membrane-bounded vesicle || 6: endomembrane system || 7: endosome || 8: endosome membrane || 9: axoneme || 10: cilium || 11: flagellum || 12: perinuclear endoplasmic reticulum || 13: Cajal body || 14: catalytic step 2 spliceosome || 15: nuclear speck || 16: spliceosomal complex || 17: U12-type spliceosomal complex || 18: actin filament || 19: early endosome || 20: HOPS complex || 21: late endosome membrane || 22: lysosomal membrane

ECM 2, Gene set "junctional sarcoplasmic reticulum membrane", Page 1

Num of ECM Genes: 2. Num of Predicted Genes: 4. ECM Strength: 7.3

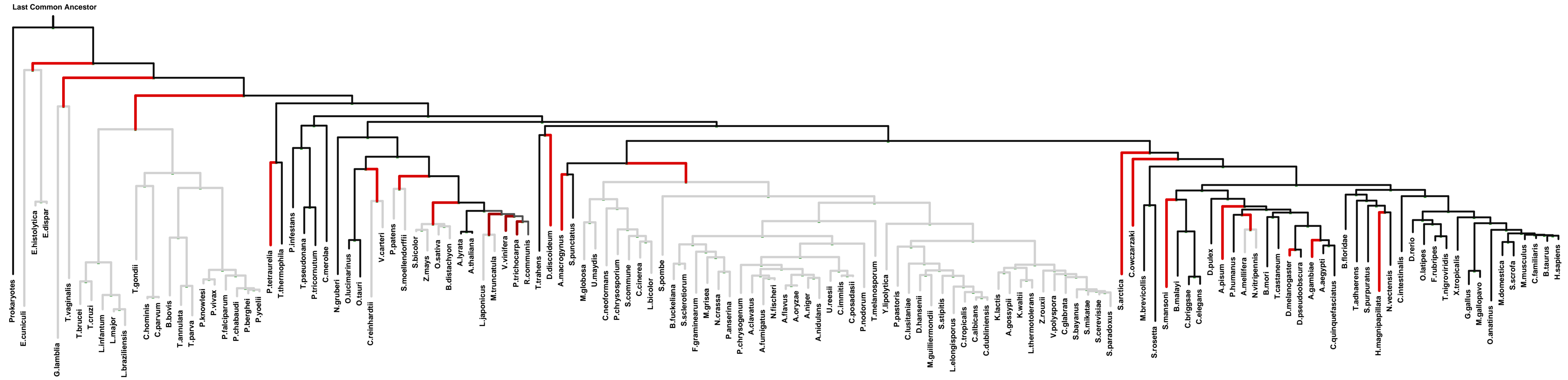


PG	LLR	Notes
A		1/2/3/4/5
A		2/3/4/6/7/8/9/10
A	35.7	4/8
	15.0	12
	5.7	
	0.2	13/14

- 1: calcium channel complex || 2: junctional sarcoplasmic reticulum membrane || 3: sarcoplasmic reticulum || 4: sarcoplasmic reticulum membrane || 5: Z disc || 6: cell cortex || 7: I band || 8: junctional membrane complex ||
- 9: smooth endoplasmic reticulum || 10: terminal cisterna || 11: T-tubule || 12: flagellum || 13: cilium || 14: flagellar membrane

ECM 3, Gene set "junctional sarcoplasmic reticulum membrane", Page 1

Num of ECM Genes: 1. Num of Predicted Genes: 4



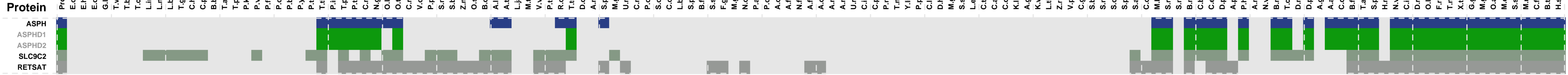
Protists

Plants

Fungi

Metazoa

PG



LLR

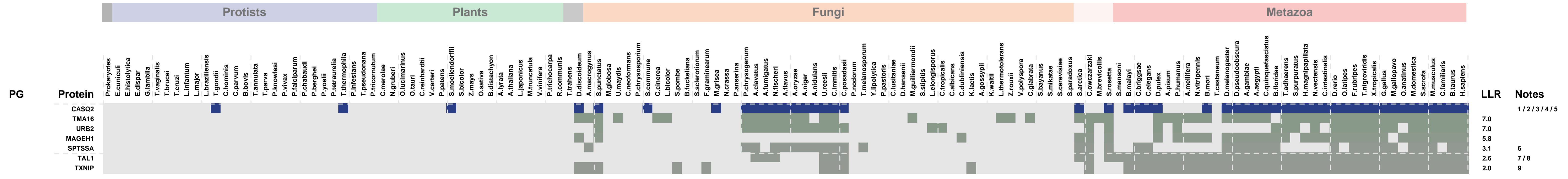
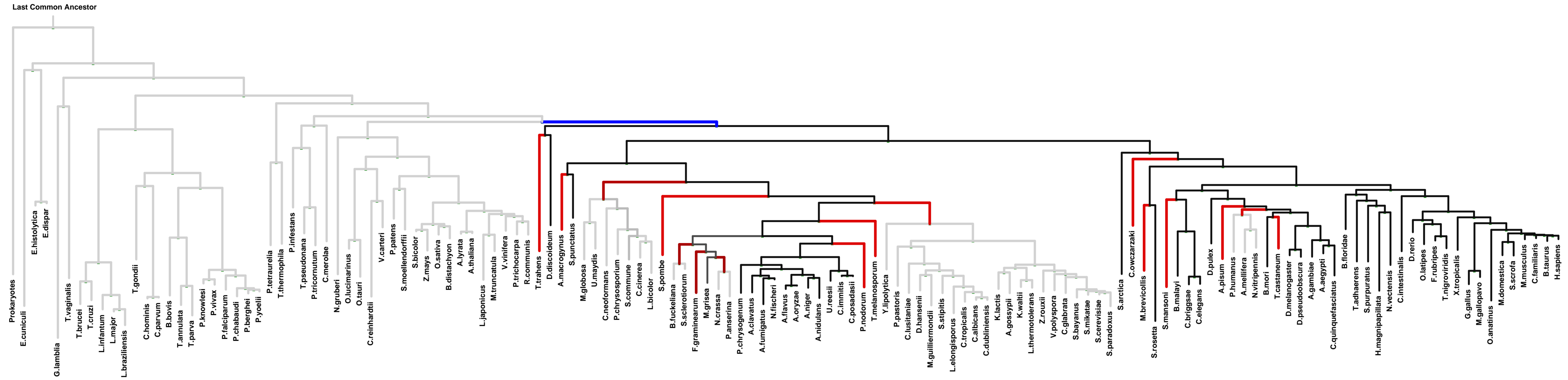
Notes

1/2/3  
61.1 2  
61.1 2  
8.6  
1.2 4/5

1: cortical endoplasmic reticulum || 2: integral to endoplasmic reticulum membrane || 3: junctional sarcoplasmic reticulum membrane || 4: nuclear membrane || 5: nuclear outer membrane

ECM 4, Gene set "junctional sarcoplasmic reticulum membrane", Page 1

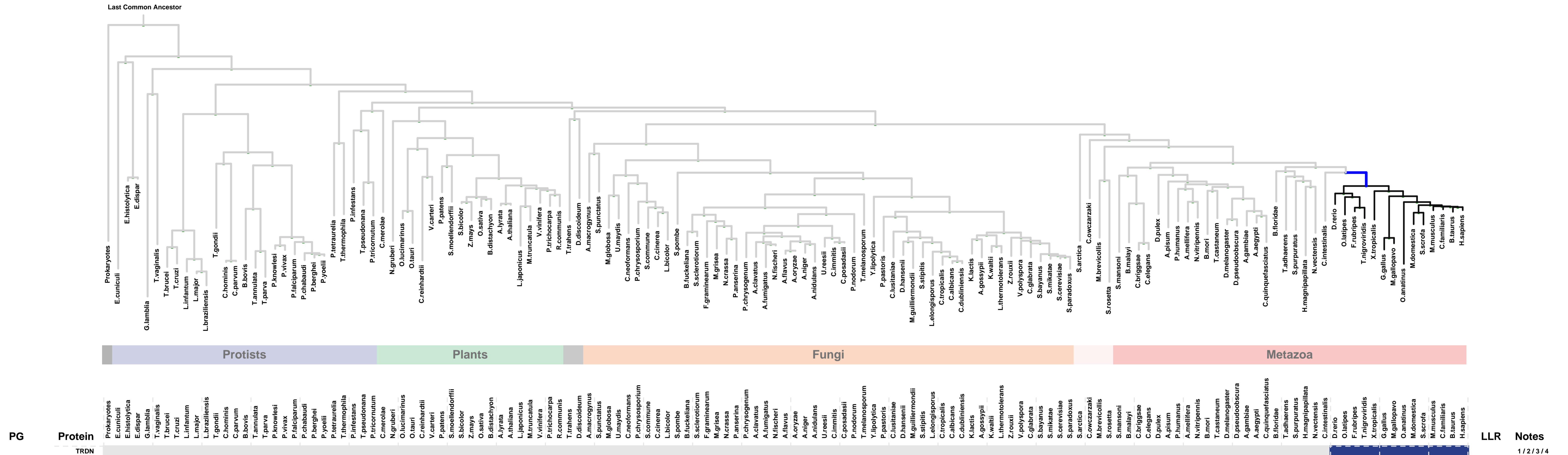
Num of ECM Genes: 1. Num of Predicted Genes: 6



1: junctional sarcoplasmic reticulum membrane || 2: sarcoplasmic reticulum || 3: sarcoplasmic reticulum lumen || 4: voltage-gated calcium channel complex || 5: Z disc || 6: serine C-palmitoyltransferase complex || 7: histone deacetylase complex || 8: nuclear chromatin || 9: mitochondrial intermembrane space

ECM 5, Gene set "junctional sarcoplasmic reticulum membrane", Page 1

Num of ECM Genes: 1. Num of Predicted Genes: 0



1: junctional sarcoplasmic reticulum membrane || 2: sarcoplasmic reticulum || 3: sarcoplasmic reticulum lumen || 4: voltage-gated calcium channel complex