

# Output results of CLIME (CLustering by Inferred Models of Evolution)

## Dataset:

Num of genes in input gene set: 2  
Total number of genes: 20834  
Prediction LLR threshold: 0

The CLIME PDF output two sections:

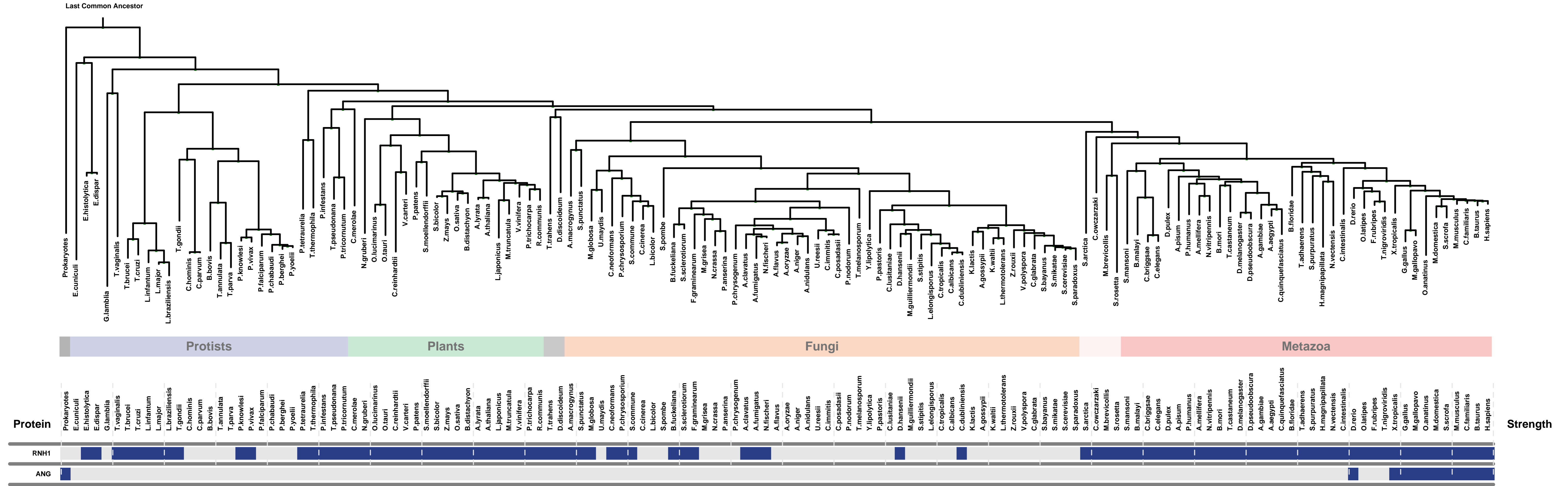
### 1) Overview of Evolutionarily Conserved Modules (ECMs)

- Top panel shows the predefined species tree.
- Bottom panel shows the partition of input genes into Evolutionary Conserved Modules (ECMs), ordered by ECM strength (shown at right), and separated by horizontal lines.
- Each row show one gene, where the phylogenetic profile indicates presence (blue) or absence (gray) of homologs in each species (column).
- Gene symbols are shown at left. Gray color indicates that the gene is a paralog to a higher scoring gene within the same ECM (based on BLASTP  $E < 1e-3$ ).

### 2) Details of each ECM and its expansion ECM+

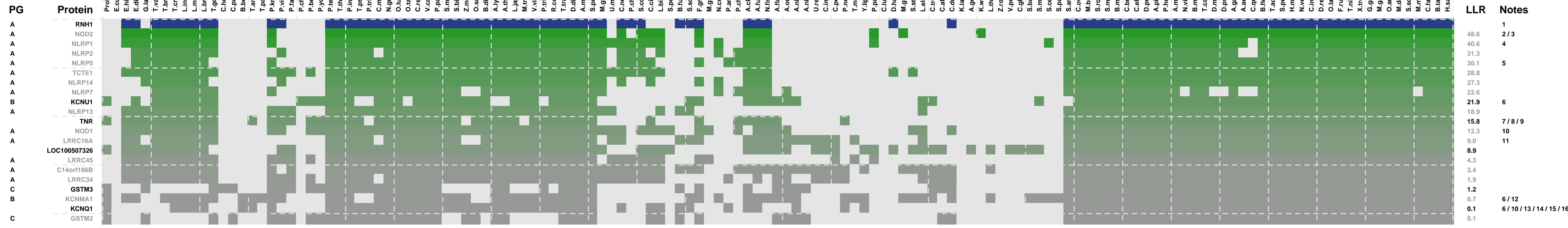
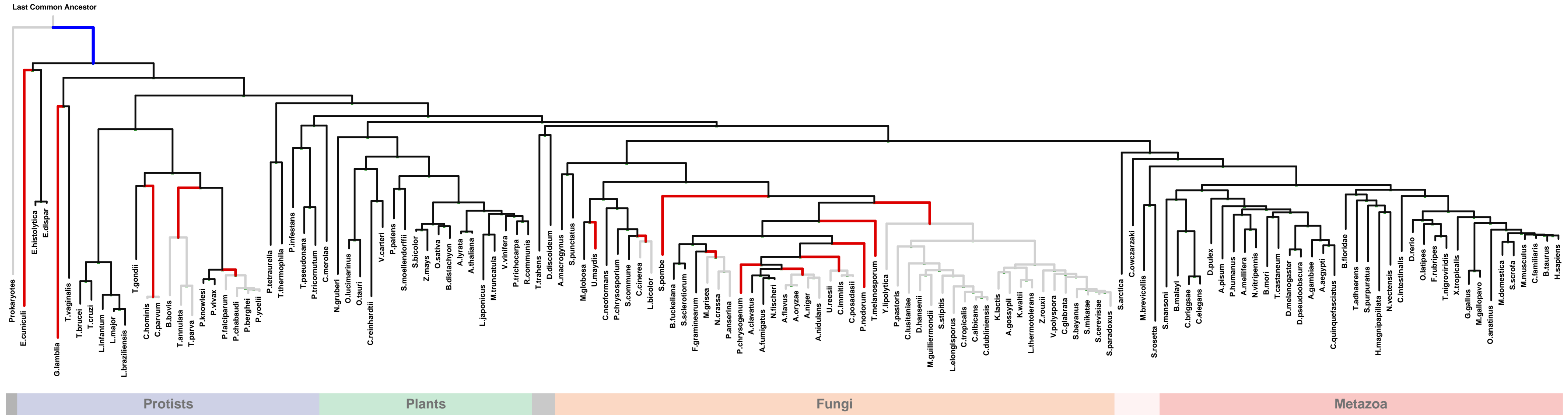
- Top panel shows the inferred evolutionary history on the predefined species tree. Branch color shows the gain event (blue) and loss events (red color, with brighter color indicating higher confidence in loss). Branches before the gain or after a loss are shown in gray.
- Bottom panel shows the input genes that are within the ECM (blue/white rows) as well as all genes in the expanded ECM+ (green/gray rows). The ECM+ includes genes likely to have arisen under the inferred model of evolution relative to a background model, and scored using a log likelihood ratio (LLR).
- PG indicates "paralog group" and are labeled alphabetically (i.e., A, B). The first gene within each paralog group is shown in black color. All other genes sharing sequence similarity (BLAST  $E < 1e-3$ ) are assigned to the same PG label and displayed in gray.

# Overview of Evolutionarily Conserved Modules (ECMs)



# ECM 1, Gene set "angiogenin-PRI complex", Page 1

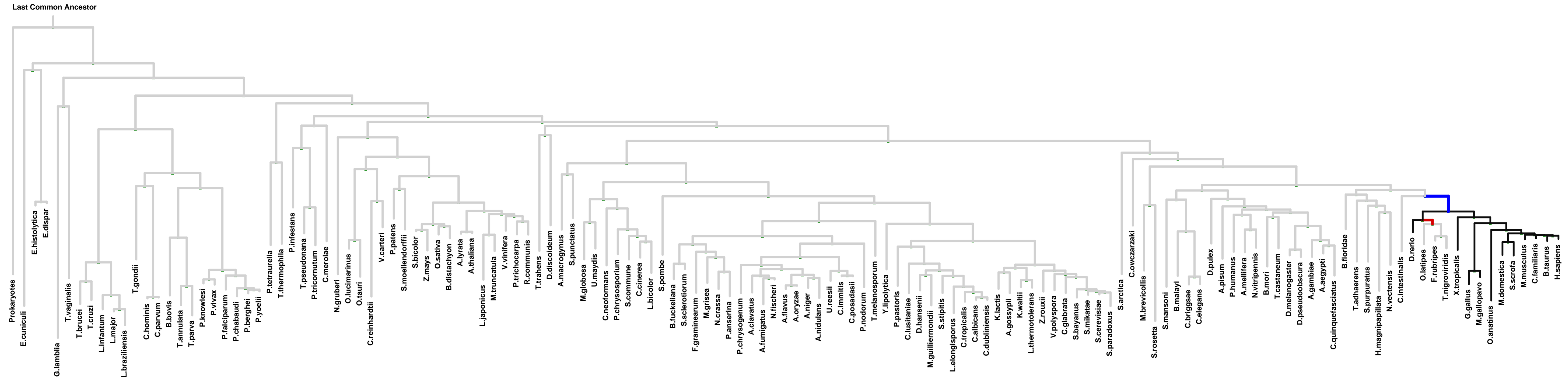
Num of ECM Genes: 1. Num of Predicted Genes: 20



1: angiogenin-PRI complex || 2: signalosome || 3: vesicle || 4: NLRP1 inflammasome complex || 5: apical cortex || 6: voltage-gated potassium channel complex || 7: membrane raft || 8: perineuronal net || 9: proteinaceous extracellular matrix || 10: basolateral plasma membrane || 11: lamellipodium || 12: caveola || 13: early endosome || 14: late endosome || 15: lysosome || 16: sarcolemma || 17: zymogen granule membrane

# ECM 2, Gene set "angiogenin-PRI complex", Page 1

Num of ECM Genes: 1. Num of Predicted Genes: 88

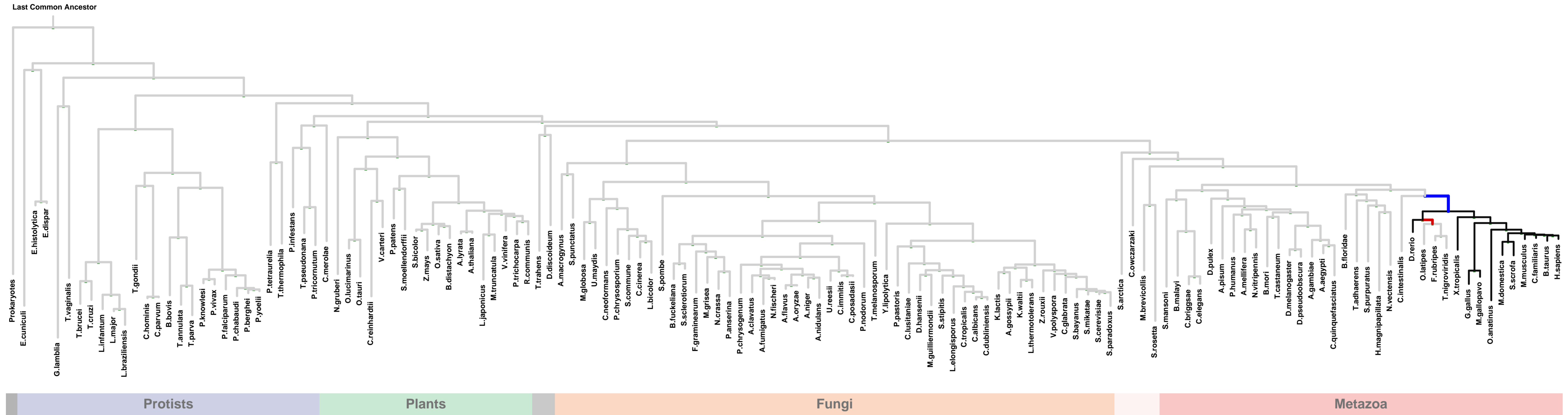


PG	Protein	LLR	Notes
A	ANG	5.9	1 / 2 / 3
B	AFM	5.9	
B	AFP	5.9	
C	CCL22	5.9	
C	CXCL11	5.9	
B	GC	5.9	4
B	GIP	5.9	5 / 6
D	KIAA1210	5.9	
D	KIR2DL2	5.9	
D	KIR2DL2	5.9	
D	KIR2DL3	5.9	
D	KIR2DL5A	5.9	
D	KIR2DL5B	5.9	
D	KIR2DS1	5.9	
D	KIR2DS2	5.9	
D	KIR2DS5	5.9	
D	LILRB1	5.9	7
D	LILRB4	5.9	
D	LRRC41	5.9	
D	MBP	5.9	8 / 9
A	OSTN	5.9	
A	RNASE1	5.9	
A	RNASE12	5.9	
A	RNASE4	5.9	
E	SNN	5.9	10
E	TAS2R10	5.9	
E	TAS2R31	5.9	
E	TAS2R41	5.9	
E	TAS2R45	5.9	
E	TAS2R50	5.9	
E	TAS2R60	5.9	
E	TAS2R64P	5.9	
E	TAS2R7	5.9	
E	TREML1	5.9	11
	100508943	5.9	

1: angiogenin-PRI complex || 2: basal lamina || 3: growth cone || 4: lysosomal lumen || 5: endoplasmic reticulum lumen || 6: secretory granule || 7: external side of plasma membrane || 8: compact myelin || 9: internode region of axon || 10: mitochondrial outer membrane || 11: platelet alpha granule

# ECM 2, Gene set "angiogenin-PRI complex", Page 2

Num of ECM Genes: 1. Num of Predicted Genes: 88

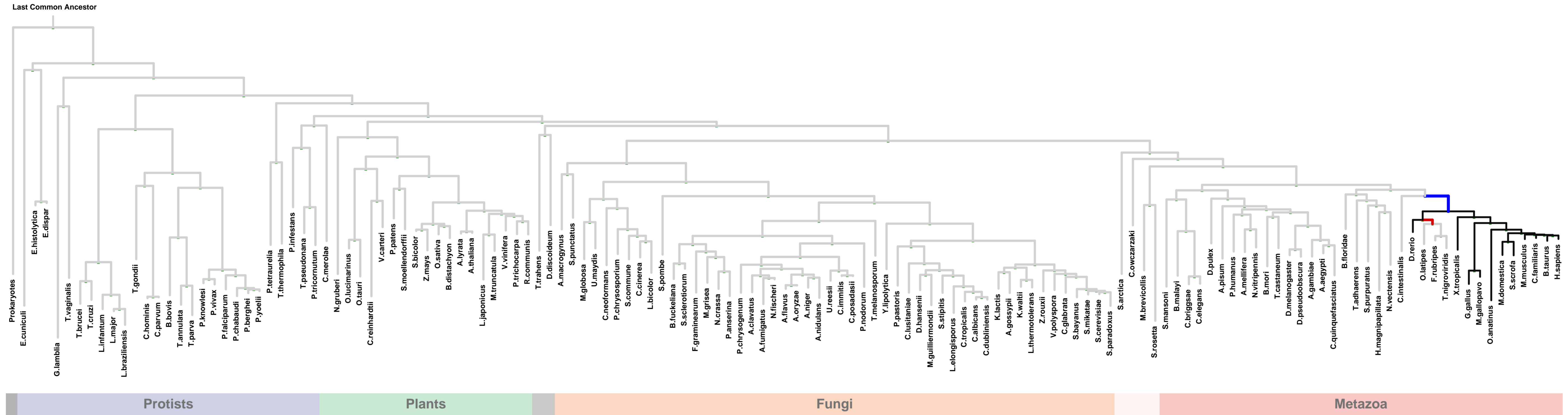


PG	Protein	LLR	Notes
	LOC646543	5.7	
	C14orf39	4.0	
	CD99	3.8	
	MIEF2	3.4	1
	PRIMA1	3.4	2 / 3
	LOC100130466	3.4	
	IFNG	3.2	4
	C11orf87	3.2	
	MPZL1	3.2	
D	KIR2DL1	3.2	
	RAD51AP1	3.0	
F	CCDC71L	3.0	
F	CCDC71	3.0	
B	ALB	3.0	5 / 6
	TMEM37	3.0	
	CSF1	3.0	7
	NMB	3.0	
	CEP68	2.4	
D	LILRA1	2.4	
	RIPPLY3	2.4	
D	LILRB2	2.4	
G	TMSB15A	2.4	
G	TMSB15B	2.4	
	FCER1G	2.4	
	100287712	2.4	4 / 8
	FXDY1	2.4	
D	100510144	2.4	9
D	100510200	2.4	
	CCDC117	2.4	
	THEMIS2	2.3	
H	IFNA8	2.2	
C	CCL1	2.2	
E	TAS2R39	2.2	
	LOC728675	2.2	
C	CCL15	2.2	

1: mitochondrial outer membrane || 2: intrinsic to plasma membrane || 3: synapse || 4: external side of plasma membrane || 5: basement membrane || 6: platelet alpha granule lumen || 7: receptor complex || 8: Fc-epsilon receptor I complex || 9: chloride channel complex

# ECM 2, Gene set "angiogenin-PRI complex", Page 3

Num of ECM Genes: 1. Num of Predicted Genes: 88



PG	Protein	LLR	Notes
	SLX4IP	1.5	
	UPK2	1.4	1
	CMTM5	1.4	
	IZUMO1	1.4	2
	TBATA	1.4	
	SWSAP1	1.4	3
	PARM1	1.2	4 / 5 / 6
	MLLT11	1.2	
	GRP	1.1	
	PRLH	1.1	
H	IFNK	0.7	
	CRLF2	0.5	
	MUC12	0.5	
	SLC51B	0.3	
	RAD54B	0.3	
	TCOF1	0.3	
	SNX21	0.2	7
	EID1	0.2	
	TEX12	0.0	8

1: integral to endoplasmic reticulum membrane || 2: acrosomal membrane || 3: Shu complex || 4: early endosome || 5: endosome membrane || 6: late endosome || 7: cytoplasmic vesicle membrane || 8: synaptonemal complex