

Output results of CLIME (CLustering by Inferred Models of Evolution)

Dataset:

Num of genes in input gene set: 4
Total number of genes: 20834
Prediction LLR threshold: 0

The CLIME PDF output two sections:

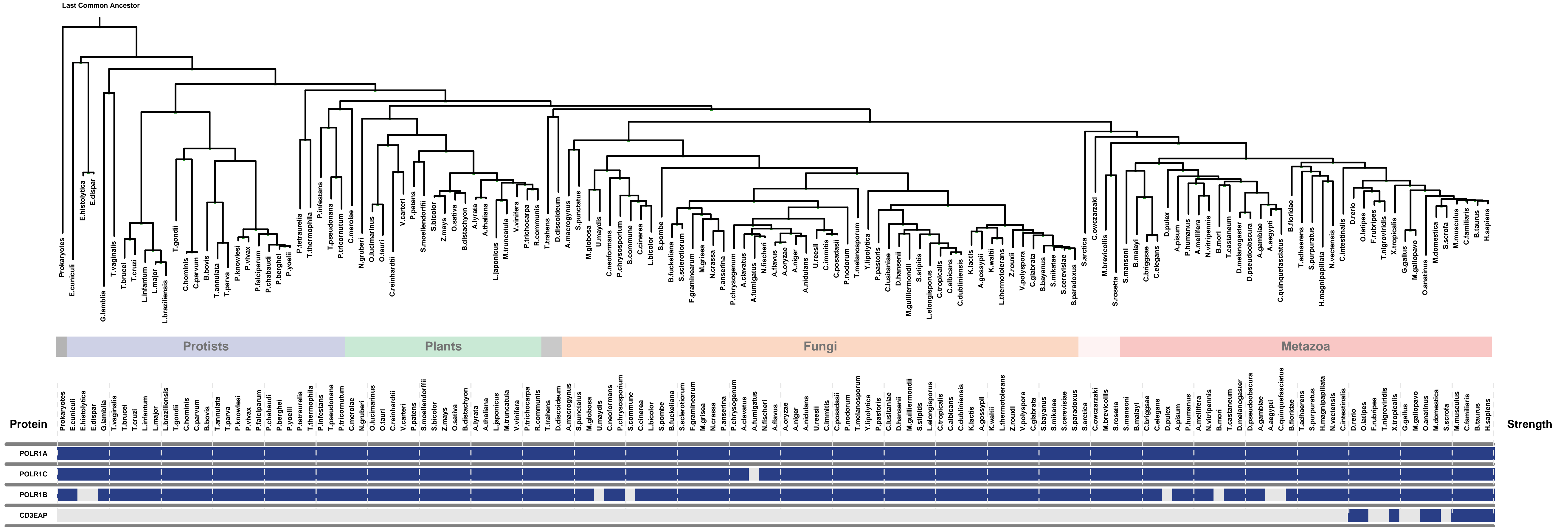
1) Overview of Evolutionarily Conserved Modules (ECMs)

- Top panel shows the predefined species tree.
- Bottom panel shows the partition of input genes into Evolutionary Conserved Modules (ECMs), ordered by ECM strength (shown at right), and separated by horizontal lines.
- Each row show one gene, where the phylogenetic profile indicates presence (blue) or absence (gray) of homologs in each species (column).
- Gene symbols are shown at left. Gray color indicates that the gene is a paralog to a higher scoring gene within the same ECM (based on BLASTP $E < 1e-3$).

2) Details of each ECM and its expansion ECM+

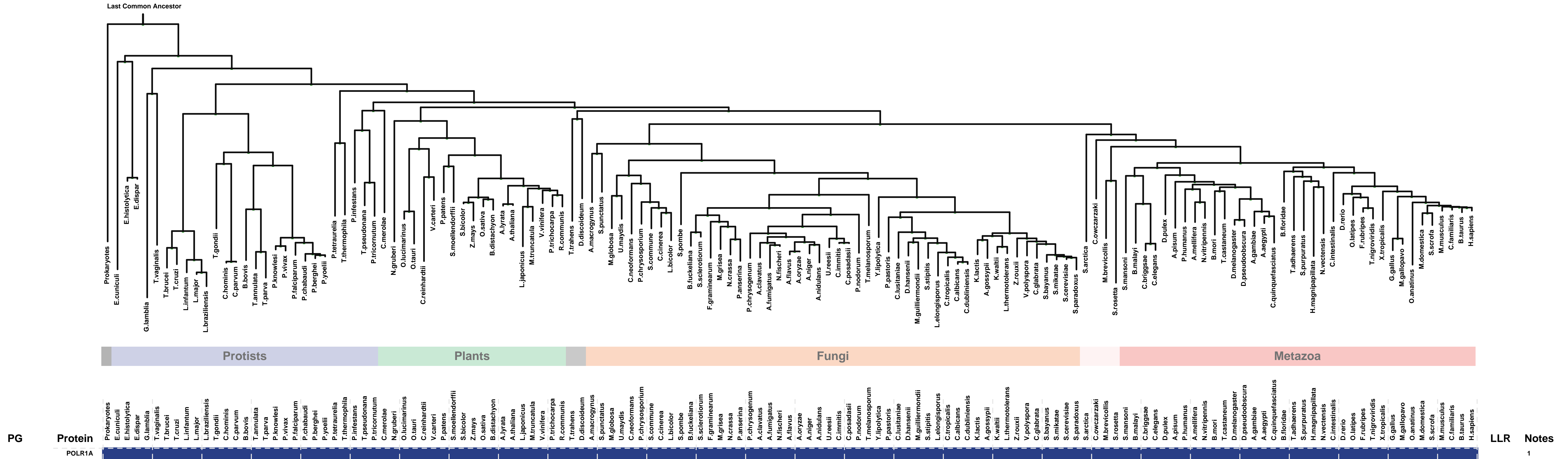
- Top panel shows the inferred evolutionary history on the predefined species tree. Branch color shows the gain event (blue) and loss events (red color, with brighter color indicating higher confidence in loss). Branches before the gain or after a loss are shown in gray.
- Bottom panel shows the input genes that are within the ECM (blue/white rows) as well as all genes in the expanded ECM+ (green/gray rows). The ECM+ includes genes likely to have arisen under the inferred model of evolution relative to a background model, and scored using a log likelihood ratio (LLR).
- PG indicates "paralog group" and are labeled alphabetically (i.e., A, B). The first gene within each paralog group is shown in black color. All other genes sharing sequence similarity (BLAST $E < 1e-3$) are assigned to the same PG label and displayed in gray.

Overview of Evolutionarily Conserved Modules (ECMs)



ECM 1, Gene set "DNA-directed RNA polymerase I complex", Page 1

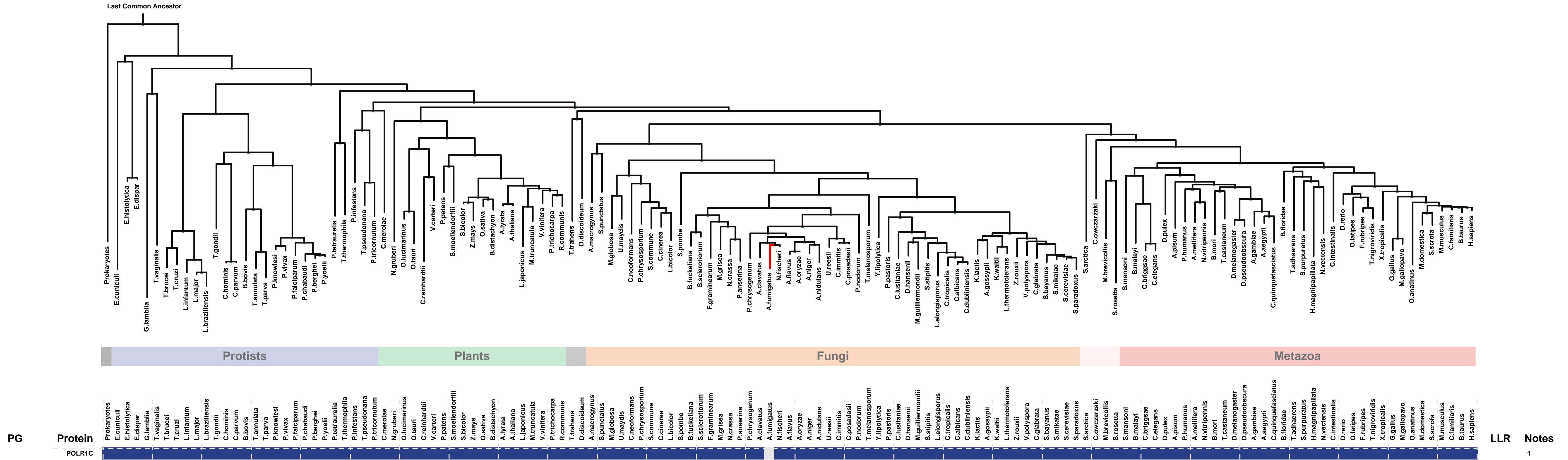
Num of ECM Genes: 1. Num of Predicted Genes: 0



1: DNA-directed RNA polymerase I complex

ECM 2, Gene set "DNA-directed RNA polymerase I complex", Page 1

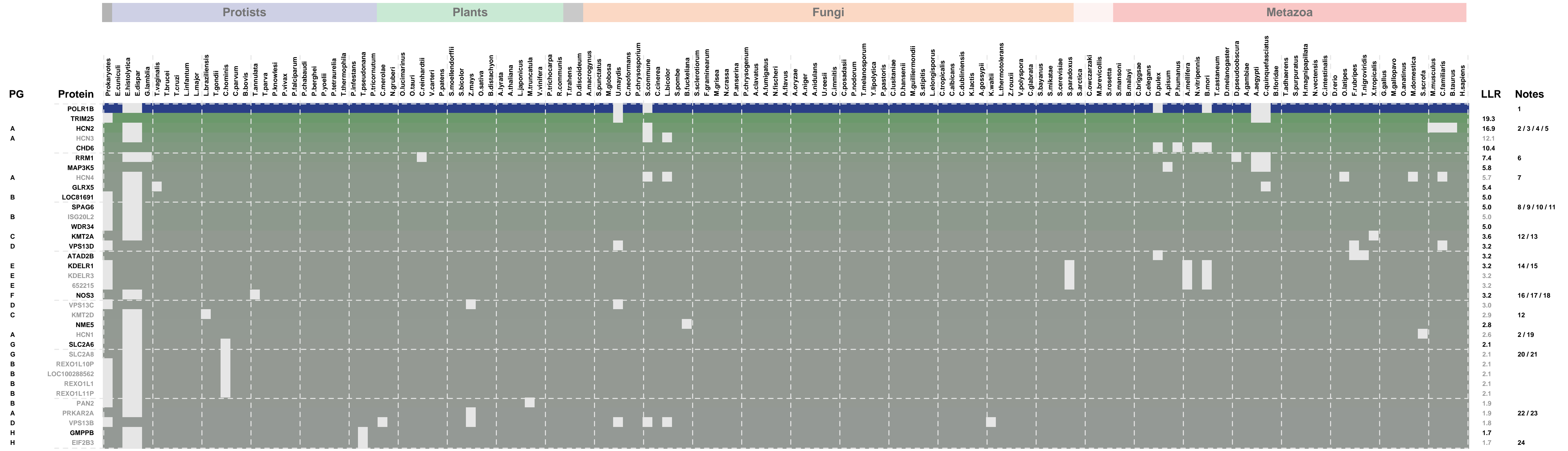
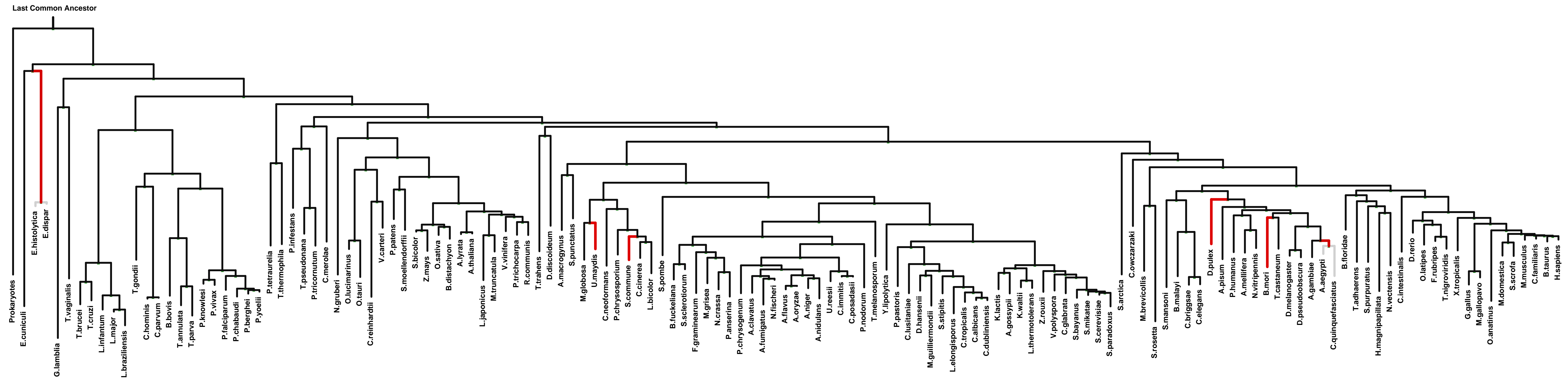
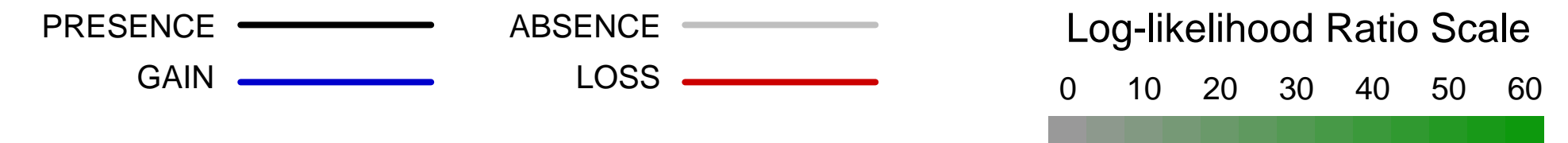
Num of ECM Genes: 1. Num of Predicted Genes: 0



1: DNA-directed RNA polymerase I complex

ECM 3, Gene set "DNA-directed RNA polymerase I complex", Page 1

Num of ECM Genes: 1. Num of Predicted Genes: 49



1: DNA-directed RNA polymerase I complex || 2: axon || 3: dendritic shaft || 4: synapse || 5: voltage-gated potassium channel complex || 6: ribonucleoside-diphosphate reductase complex || 7: terminal button || 8: axoneme || 9: cilium || 10: flagellum || 11: microtubule cytoskeleton || 12: histone methyltransferase complex || 13: MLL1 complex || 14: cis-Golgi network || 15: endoplasmic reticulum-Golgi intermediate compartment || 16: apical part of cell || 17: caveola || 18: endocytic vesicle membrane || 19: dendrite || 20: cytoplasmic vesicle membrane || 21: synaptic vesicle || 22: cAMP-dependent protein kinase complex || 23: T-tubule || 24: eukaryotic translation initiation factor 2B complex

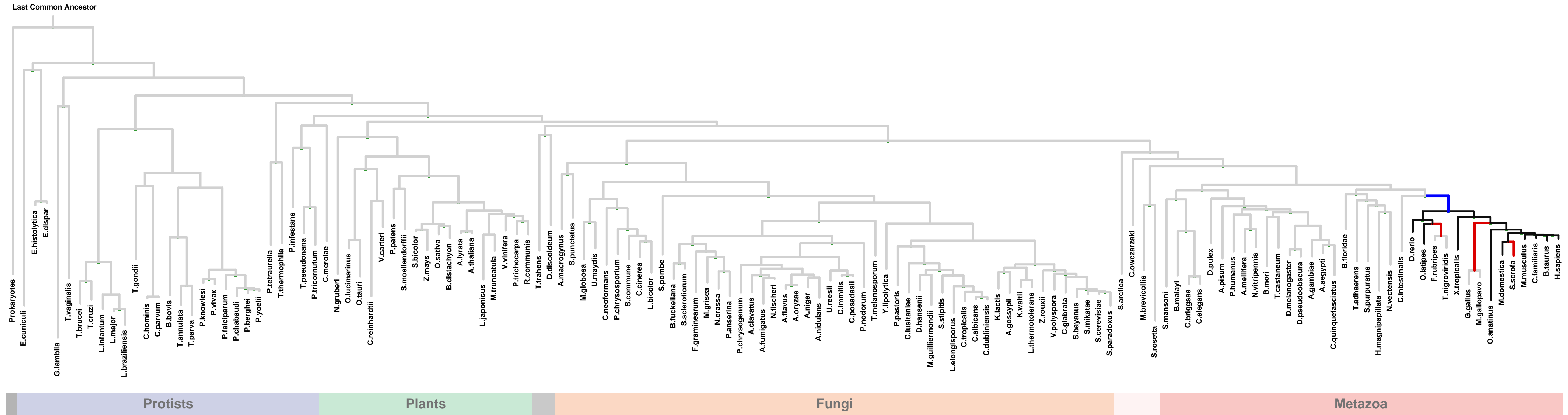
ECM 4, Gene set "DNA-directed RNA polymerase I complex", Page 1

Num of ECM Genes: 1. Num of Predicted Genes: 33

PRESENCE ——— ABSENCE ———
GAIN ——— LOSS ———

Log-likelihood Ratio Scale

0 10 20 30 40 50 60



PG	Protein	LLR	Notes
A	CD3EAP	9.8	1 / 2 / 3
	MXRA7	8.9	4 / 5
	UCMA	8.9	
A	SCAND1	8.9	
	VN1R5	8.9	
A	ZNF174	8.9	6
	ZSCAN2	8.9	
	RGCC	8.3	
	TSPAN32	8.3	
	C16orf46	8.1	
	TMEM158	7.9	
	TMEM179B	7.8	
	RLN2	7.7	
	APOL5	7.4	
	MN1	6.0	
	PLVAP	4.5	7
	C1orf63	4.0	
	LOC649201	3.4	
	TCTA	3.1	
	ECM1	3.1	5 / 8
	CCDC117	2.9	
	CRLF2	1.1	
	MUC12	1.0	
	VGf	0.8	9 / 10 / 11 / 12
	PSRC1	0.4	13 / 14 / 15 / 16 / 17
	UPK2	0.2	18
	TBATA	0.2	
SWSAP1	0.2	19	
IZUMO1	0.2	20	
CMTM5	0.2		
GLYAT	0.1		
FANCG	0.1	21	
SERTM1	0.1		
EMD	0.0	15 / 22 / 23 / 24 / 25	

1: chromosome || 2: DNA-directed RNA polymerase I complex || 3: RNA polymerase I transcription factor complex || 4: aggresome || 5: proteinaceous extracellular matrix || 6: actin cytoskeleton || 7: caveola || 8: extracellular matrix || 9: cytoplasmic vesicle || 10: neuron projection || 11: secretory granule membrane || 12: transport vesicle || 13: microtubule cytoskeleton || 14: midbody || 15: spindle || 16: spindle microtubule || 17: spindle pole || 18: integral to endoplasmic reticulum membrane || 19: Shu complex || 20: acrosomal membrane || 21: Fanconi anaemia nuclear complex || 22: nuclear envelope || 23: nuclear inner membrane || 24: nuclear membrane || 25: nuclear outer membrane