

Output results of CLIME (CLustering by Inferred Models of Evolution)

Dataset:

Num of genes in input gene set: 4
Total number of genes: 20834
Prediction LLR threshold: 0

The CLIME PDF output two sections:

1) Overview of Evolutionarily Conserved Modules (ECMs)

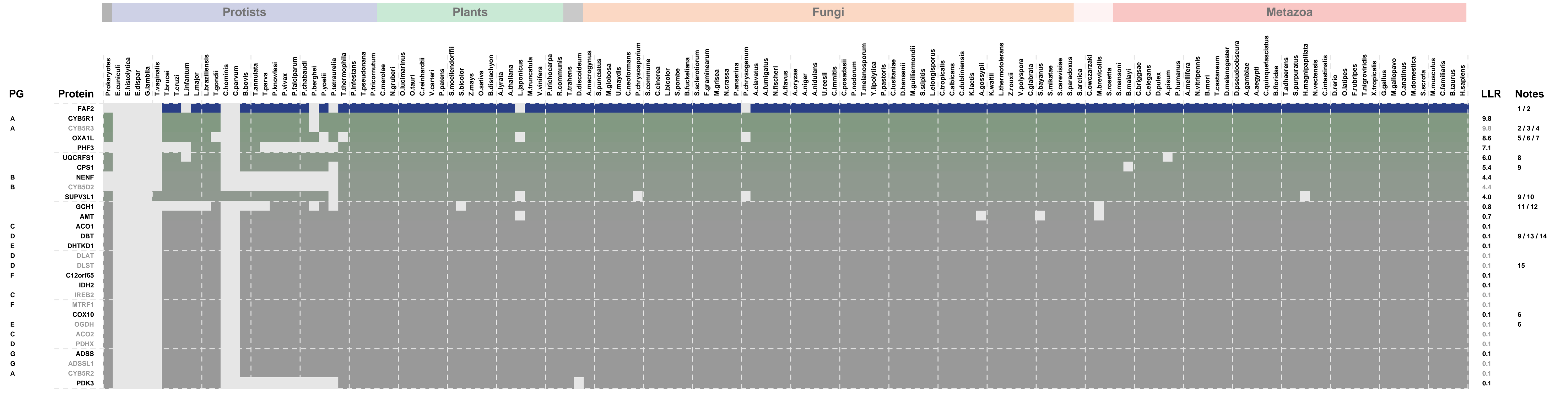
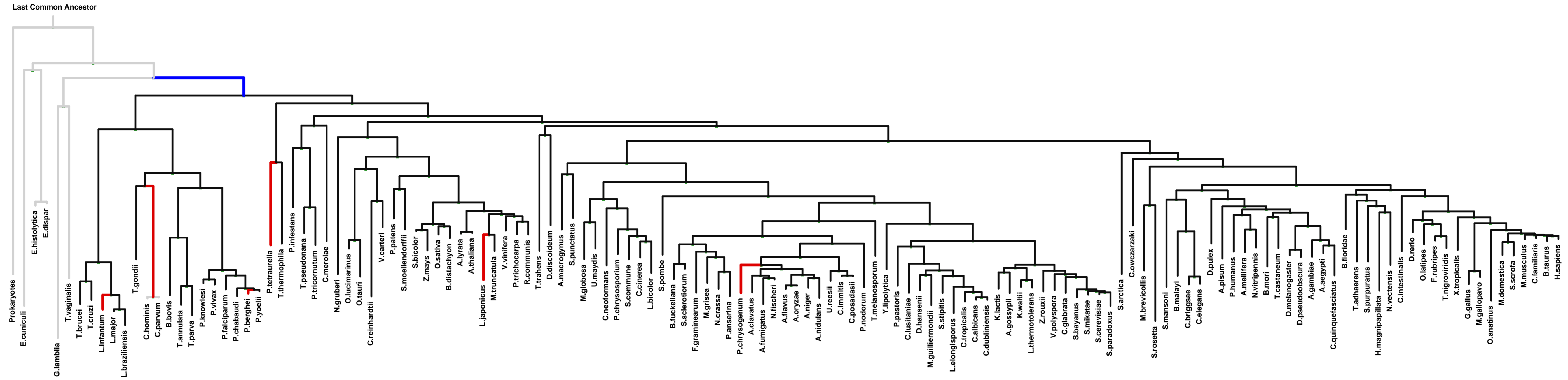
- Top panel shows the predefined species tree.
- Bottom panel shows the partition of input genes into Evolutionary Conserved Modules (ECMs), ordered by ECM strength (shown at right), and separated by horizontal lines.
- Each row show one gene, where the phylogenetic profile indicates presence (blue) or absence (gray) of homologs in each species (column).
- Gene symbols are shown at left. Gray color indicates that the gene is a paralog to a higher scoring gene within the same ECM (based on BLASTP $E < 1e-3$).

2) Details of each ECM and its expansion ECM+

- Top panel shows the inferred evolutionary history on the predefined species tree. Branch color shows the gain event (blue) and loss events (red color, with brighter color indicating higher confidence in loss). Branches before the gain or after a loss are shown in gray.
- Bottom panel shows the input genes that are within the ECM (blue/white rows) as well as all genes in the expanded ECM+ (green/gray rows). The ECM+ includes genes likely to have arisen under the inferred model of evolution relative to a background model, and scored using a log likelihood ratio (LLR).
- PG indicates "paralog group" and are labeled alphabetically (i.e., A, B). The first gene within each paralog group is shown in black color. All other genes sharing sequence similarity (BLAST $E < 1e-3$) are assigned to the same PG label and displayed in gray.

ECM 1, Gene set "Cdc48p-Npl4p-Ufd1p AAA ATPase complex", Page 1

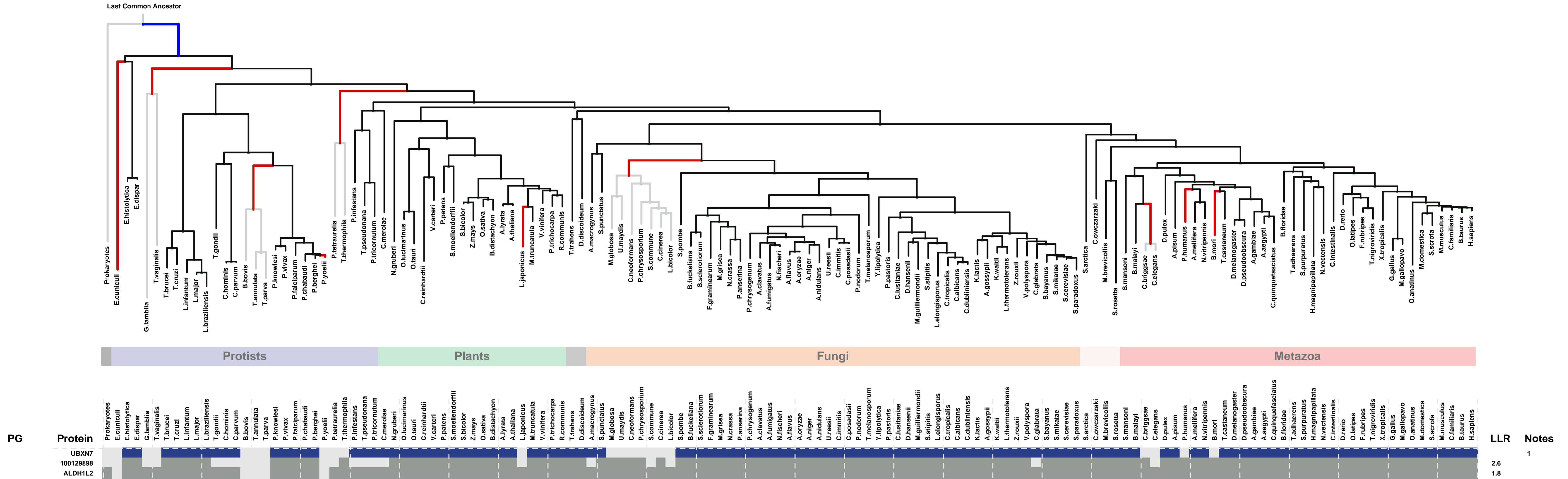
Num of ECM Genes: 1. Num of Predicted Genes: 28



1: Cdc48p-Npl4p-Ufd1p AAA ATPase complex || 2: lipid particle || 3: hemoglobin complex || 4: mitochondrial outer membrane || 5: integral to mitochondrial membrane || 6: mitochondrial membrane || 7: mitochondrial respiratory chain || 8: mitochondrial respiratory chain complex III || 9: mitochondrial nucleoid || 10: mitochondrial degradosome || 11: cytoplasmic vesicle || 12: nuclear membrane || 13: microtubule cytoskeleton || 14: mitochondrial alpha-ketoglutarate dehydrogenase complex || 15: oxoglutarate dehydrogenase complex

ECM 2, Gene set "Cdc48p-Npl4p-Ufd1p AAA ATPase complex", Page 1

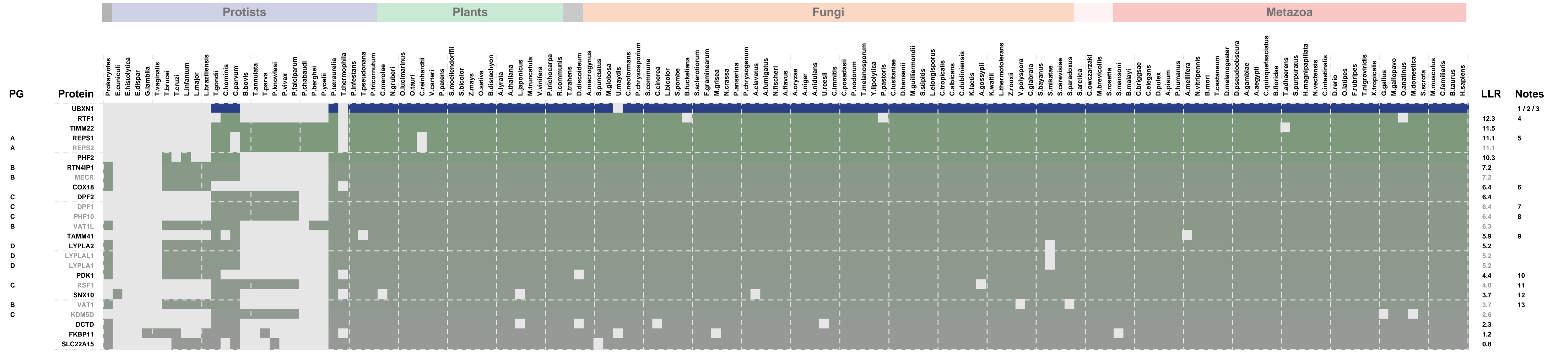
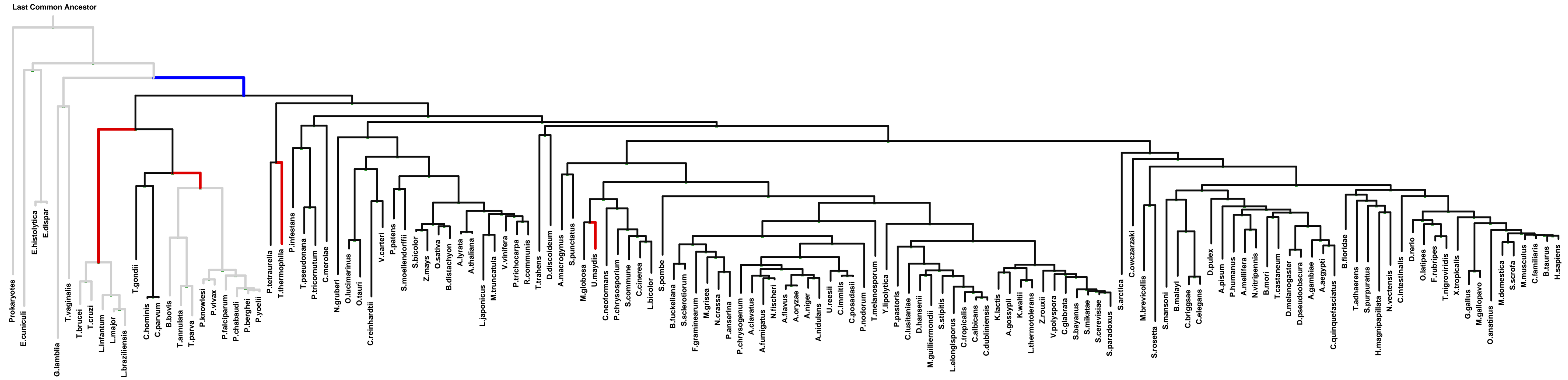
Num of ECM Genes: 1. Num of Predicted Genes: 2



1: Cdc48p-Npl4p-Ufd1p AAA ATPase complex

ECM 3, Gene set "Cdc48p-Npl4p-Ufd1p AAA ATPase complex", Page 1

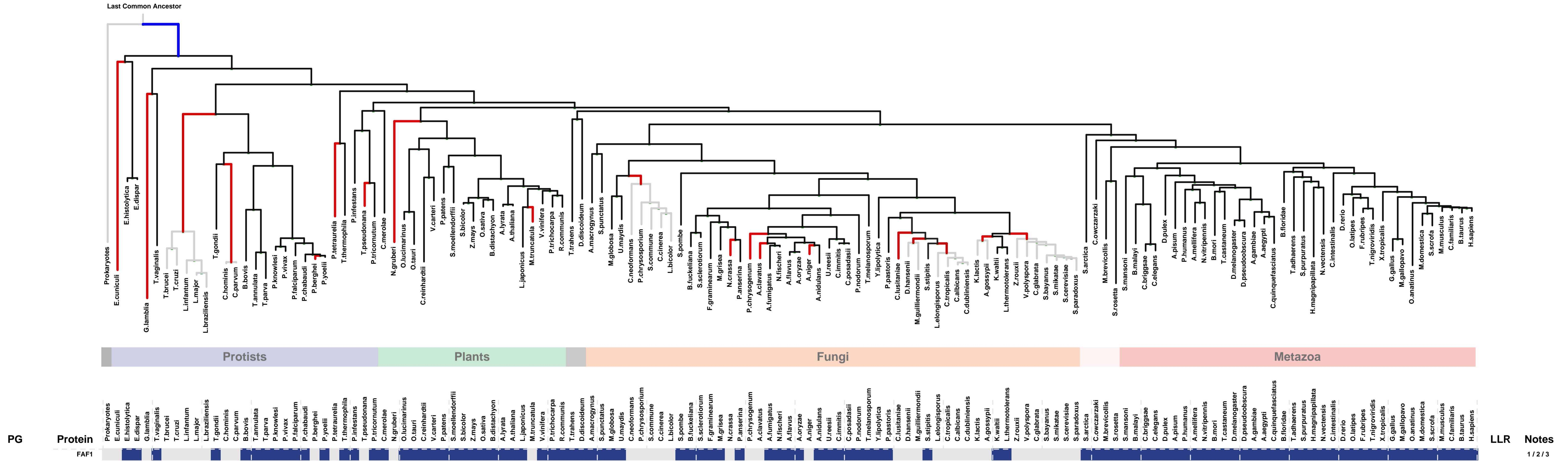
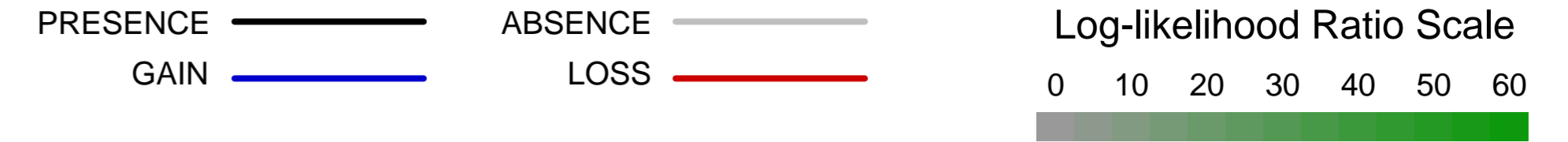
Num of ECM Genes: 1. Num of Predicted Genes: 24



1: Cdc48p-Npl4p-Ufd1p AAA ATPase complex || 2: dendrite || 3: proteasome complex || 4: Cdc73/Paf1 complex || 5: coated pit || 6: integral to mitochondrial inner membrane || 7: nBAF complex || 8: npBAF complex || 9: extrinsic to mitochondrial inner membrane || 10: pyruvate dehydrogenase complex || 11: RSF complex || 12: extrinsic to endosome membrane || 13: mitochondrial outer membrane

ECM 4, Gene set "Cdc48p-Npl4p-Ufd1p AAA ATPase complex", Page 1

Num of ECM Genes: 1. Num of Predicted Genes: 0



1: CD95 death-inducing signaling complex || 2: Cdc48p-Npl4p-Ufd1p AAA ATPase complex || 3: nuclear envelope